

A full-page advertisement for Reusch Pure Goalkeeping 2019. The central figure is Samir Handanović, a professional goalkeeper, shown from the waist up. He is wearing a black long-sleeved shirt and black shorts. He is holding a white and black soccer ball with both hands, which are clad in bright yellow Reusch goalkeeper gloves. The background is dark with a complex, glowing green geometric pattern of interconnected lines and polygons, resembling a molecular or network structure. The lighting is dramatic, highlighting the contours of his face and the texture of his gloves and shirt.

reusch

PURE GOALKEEPING 2019

reusch.com



PURE GOALKEEPING 2019

DEJAN STOJANOVIĆ
FC St. Gallen
Super League / Switzerland

DIEGO LÓPEZ
RCD Espanyol Barcelona
La Liga / Spain

SAMIR HANDANOVIČ
FC Internazionale
Serie A / Italy

BENOIT COSTIL
FC Girondins Bordeaux
Ligue 1 / France

RALF FÄHRMANN
FC Schalke 04
1. Bundesliga / Germany



WE ARE THE GOALKEEPING SPECIALIST.

45 years and 6 World Cup titles after we developed the world's first modern goalkeeper glove, we think, breathe and live goalkeeping more than ever. Every day we pursue our mission in creating the perfect fit, the ultimate grip, the absolute protection. While staying true to our values we develop the best products for all the real Number Ones out there.

THIS IS REUSCH, THIS IS PURE GOALKEEPING.

04 SPONSORING

06 FIT CONTROL

12 THE REUSCH PALM SERIES

- 13 MAXIMIZE YOUR PERFORMANCE
- 14 SOFT SERIES
- 15 AQUA SERIES
- 15 SOLID SERIES

16 HOW TO TREAT GOALKEEPER GLOVES RIGHT

17 GLOVE CUTS

18 FIT CONTROL GLOVE TECHNOLOGIES

20 GOALKEEPER GLOVES

- 21 FIT CONTROL SOFT SERIES
- 30 FIT CONTROL AQUA SERIES
- 32 FIT CONTROL SOLID SERIES
- 36 FIT CONTROL JUNIOR
- 50 FUTSAL

52 GOALKEEPER APPAREL

- 54 BASELAYER HARD PADDED
- 56 BASELAYER SOFT PADDED
- 57 BASELAYER UNPADDED
- 58 MATCH LINE
- 59 WARM UP WEARR
- 60 PANTS & SHORTS
- 62 APPAREL JUNIOR

64 PROTECTION

- 65 PROTECTORS
- 69 SHINGUARDS

70 ACCESSORIES

74 CARE INSTRUCTIONS

76 INDEX

78 SIZE CHARTS

80 INTERNATIONAL PARTNERS

82 LAUNCH DATES

REUSCH KEEPERS WORLDWIDE

MORE THAN 220 GOALKEEPERS IN THE FIRST NATIONAL DIVISIONS
ALL OVER THE WORLD TRUST IN REUSCH GOALKEEPER GLOVES.*

ARGENTINA (Primera División)

F. Armani, G. Lux (River Plate)
J. Musso (Racing Club)
G. Rehak, D. Albil (Independiente)
S. Torrico (San Lorenzo)
F. Lanzillotta (Argentinos Juniors)
A. Aguerre (Velez Sarsfield)
A. Domínguez (Colon)
N. Fernandez (Union)
M. Miño (Rosario Central)
N. Ibañez, L. Pocrnjic (Newell's Old Boys)
L. Bruman (Godoy Cruz)
L. Corti (San Martin de San Juan)
M. Vega (Aldosivi)
F. Costa (Patronato)
M. Ibañez (Lanus)
F. Pizicanella (Atletico Tucuman)
M. Díaz, M. Garcia (Huracan)
A.M. Arias (Gimnasia)
F. Cambese (Banfield)
F. Crivelli (Tigre)

BOLIVIA (LFPB)

R. Banegas (Oriente Petrolero)
L. Claros, J. Wichonvski (Club Bolívar)
Y. Salazar (Destroyers)
C. Martínez, L. Romero (Nacional de Potosí)
M.D. Vaca (Blooming)

BRAZIL (Série A)

Marcelo Grohe (Grêmio FBPA)

CHILE (Primera División)

N. Peranic (San Marcos De Arica)

COLOMBIA (Primera A)

J. Cuadrado (Once Caldas)
G. Caffa (Cortulua)

COSTA RICA (Primera División)

A. Gómez Bermudez (Deportivo Saprissa)
A. Quesada Ramírez (AD San Carlos)
D. Forvis Espinoza, B.A. Morales Carillo (AD Santos Guápiles)
L.D. Sequeira Soto (AD Carmelita)

ECUADOR (Liga Femenina)

S. Berruz (Barcelona)

JAPAN (J1 League)

K. Tokushige (V-Varen Nagasaki)
A. Suzuki (Yokohama Marinos)
T. Akahoshi (Sagan Tosu)

MEXICO (Liga MX)

N. Guzmán (UANL Tigres)
M. Barovero (CF Monterrey)
S. Sosa (Monarcas Morelia)
G. Herrera (León / Femenil)

PARAGUAY (Primera División)

P. Gonzalez (Olimpia)
D. Barreto, O. Cabral (General Díaz)
G. Guruceaga, V. Centurion (Guaraní)
R. Escobar (Sol de America)
A. Chenk (Cerro Porteño)
A. Vento (Sportivo Luqueño)
J. Espinola (Nacional de Paraguay)
A. Vera (Independiente de Campo Grande)
J. Chena (Club Deportivo Capiata)

PERÚ (Primera División)

P. Zubczuk (Universitario de Deportes)
F. Nicosia (Academia Cantolao)
F. Martinuzzi (Sport Boys)
D. Morales, J. Medina (Real Garcilaso)
J. Aliaga (Deportivo Municipal)
E. Figueroa (Comerciantes Unidos)

URUGUAY (Primera División)

E. Conde (Club Nacional de Fútbol)
M. Rodriguez, M. Silvera (Montevideo Wanderers)
N. Perez, T. Cantero (River Plate)
D. Melian (Racing Montevideo)
G. Falcon (Boston River)
F. Laforia (Atenas San Carlos)
D. Denis (Fenix Montevideo)
C. Techera, S. Fuentes (Progreso)

USA (MLS)

S. Levene (NY Red Bull)
S. Lewis (Philadelphia Union)
S. Cleveland (Chicago Fire)
A. Grimwis (Orlando City FC)

VENEZUELA (Primera División)

B. Velazques (Tachira)
M. Santilli (Mineros)
A. Liebeskind, C. Gonzalez (La Guaira)
L. Teran (Trujillanos)

ICELAND (Pepsídeild)

C. Martinez (KA)
S. Kristinn (Keflavik)

SCOTLAND (Premiership)

J. Hamilton, J. McLaughlin (Heart of Midlothian FC)
C. Samson (St. Mirren)
G. Woods (Hamilton Academical)

NORTHERN IRELAND (Premiership)

G. Deane (Linfield FC)
J. Parr (Warrenpoint Town)

NETHERLANDS (Eredivisie)

B. Jones (Feyenoord)
E. Room, L. Koopmans (PSV Eindhoven)
R. Pasveer (Vitesse Arnhem)
W. van der Steen (SC Heerenveen)
G. Coutinho (AZ Alkmaar)
R. Fij (Heracles Almelo)
N. Hengelman (FC Twente Enschede)

ENGLAND (FA Women's Super League)

M. Walsh (Yeovil Town Ladies)

IRELAND (Premier Division)

B. Clarke (Limerick FC)
N. Corbet (Waterford)
G. Rogers (Dundalk FC)

SPAIN (LaLiga Santander)

D. López (RCD Espanyol Barcelona)
G. Iraizoz (Girona FC)
M. Barbosa, D. Lazaro (Villareal CF)
N. Champagne (CD Leganés)

NORWAY (Eliteserien)

R. Friedrich (FK Bodø/Glimt)
K. Schau-Ødden (Roa Dynamite Girls)

FINLAND (Veikkausliiga)

M. Uusitalo, M. Rudakovic (HJK Helsinki)
T. Murray, D. Taleski (Honka)
M. Meriluoto, L. Rosenström (HJK Helsinki Women)

SWEDEN (Damallsvenskan)

C. Ekstrand (Linköpings FC F19)

DENMARK (Superligaen)

B. Bellot (Brøndby IF)
T. Mikkelsen (Odense Boldklub)

LATVIA (Virsliga)

V. Melnicenko (FK Ventspils)

POLAND (Ekstraklasa)

L. Radliński, D. Pietrkiewicz (Sandecja Nowy Sącz)
L. Budzilek (Pogon Szczecin)
P. Steinbors (Arka Gdynia)
M. Gostomski (Korona Kielce)

LUXEMBOURG (BGL Ligue)

R. Schon (FC UNA Strassen)

GERMANY (1. Bundesliga)

R. Fährmann (FC Schalke 04)
R. Zentner (1. FSV Mainz 05)
F. Giefer (FC Augsburg)
J. Drobny (SV Werder Bremen)
M. Earps (VfL Wolfsburg Frauen)

CZECH REPUBLIC (HET Liga)

F. Nita (AC Sparta Praha)
Š. Spurný, M. Reichl (Sigma Olomouc)

ROMANIA (Liga 1)

N. Calancea (CSU Craiova)

BELGIUM (Jupiler Pro League)

K. Steppe (VV St. Truiden)
D. De Wolf (KSC Lokeren)
M. Vanhommel (KV Oostende)

SLOVENIA (Prva Liga)

M. Rozman (NK Celje)
M. Kovačič, K. Lipovac (NK Aluminij)
A. Ivačić (NK Olimpija)
G. Sorčan (ND Gorica)
E. Džafič (NK Triglav)
P. Marko, R. Matej (NK Rudar)

AUSTRIA (Bundesliga)

C. Riegler (SKN St. Pölten)
C. Knett, L. Wedl, H. Hankic
(FC Wacker Innsbruck)

CROATIA (1. HNL)

D. Livaković (HNK Dinamo Zagreb)

SERBIA (SuperLiga)

A. Vjekoslav (NK Radnički)

FRANCE (Ligue 1)

B. Costil (Girondins Bordeaux)
B. Reynet (Dijon FCO)
C. Tatarusanu, M. Dupé (FC Nantes)
Y. Cardinale (OGC Nice)
M. Goicoechea (Toulouse FC)

ITALY (Serie A)

S. Handanovic, D. Padelli (FC Internazionale)
A. Cragno, R. De Andrade (Cagliari Calcio)
A. Meret, S. Scuffet (Udinese Calcio)
A. Consigli (Sassuolo Calcio)
E. Berisha (Atalanta BC)
M. Sportiello, M. Cerofolini (AC Fiorentina)
S. Sirigu, S. Ichazo (FC Torino)
E. Viviano (UC Sampdoria)
L. Sepe (SSC Napoli)
A. Mirante, A. Da Costa (FC Bologna)
I. Vargic (SS Lazio)
A. Seculin (Chievo Verona)
C. Puggioni (Benevento Calcio)
M. Storari (AC Milan)

SWITZERLAND (Super League)

D. Stojanovic, G. Tolino (FC St. Gallen)
M. Salvi, L. Hunn, K. Makripodis
(Grasshopper Club Zürich)
G. Faivre, F. Hornung (FC Thun)
J. Kiassumbua, N. Baumann (FC Lugano)
L. Walthert (Xamax Neuchatel)
D. Marzino (BSC YB Bern)
A. Signori (FC Basel)
N. Baumann (FC Zürich)
N. Berchtold (FC Sion)

GREECE (Super League)

M. Kotnik (Panionios)

CYPRUS (First Division)

R. Veselovsky (Nea Salamina Famagusta)

FIT CONTROL

TAILORED PRECISION.

**DESIGNED
FOR PERFECT FIT.**

**ENGINEERED
FOR SUPERIOR
PERFORMANCE.**



FIT CONTROL SOFT

Market Launch & Communication Push:
30th NOVEMBER 2018



FIT CONTROL **AQUA**

Market Launch: **30th NOVEMBER 2018**
Communication Push: **14th DECEMBER 2018**

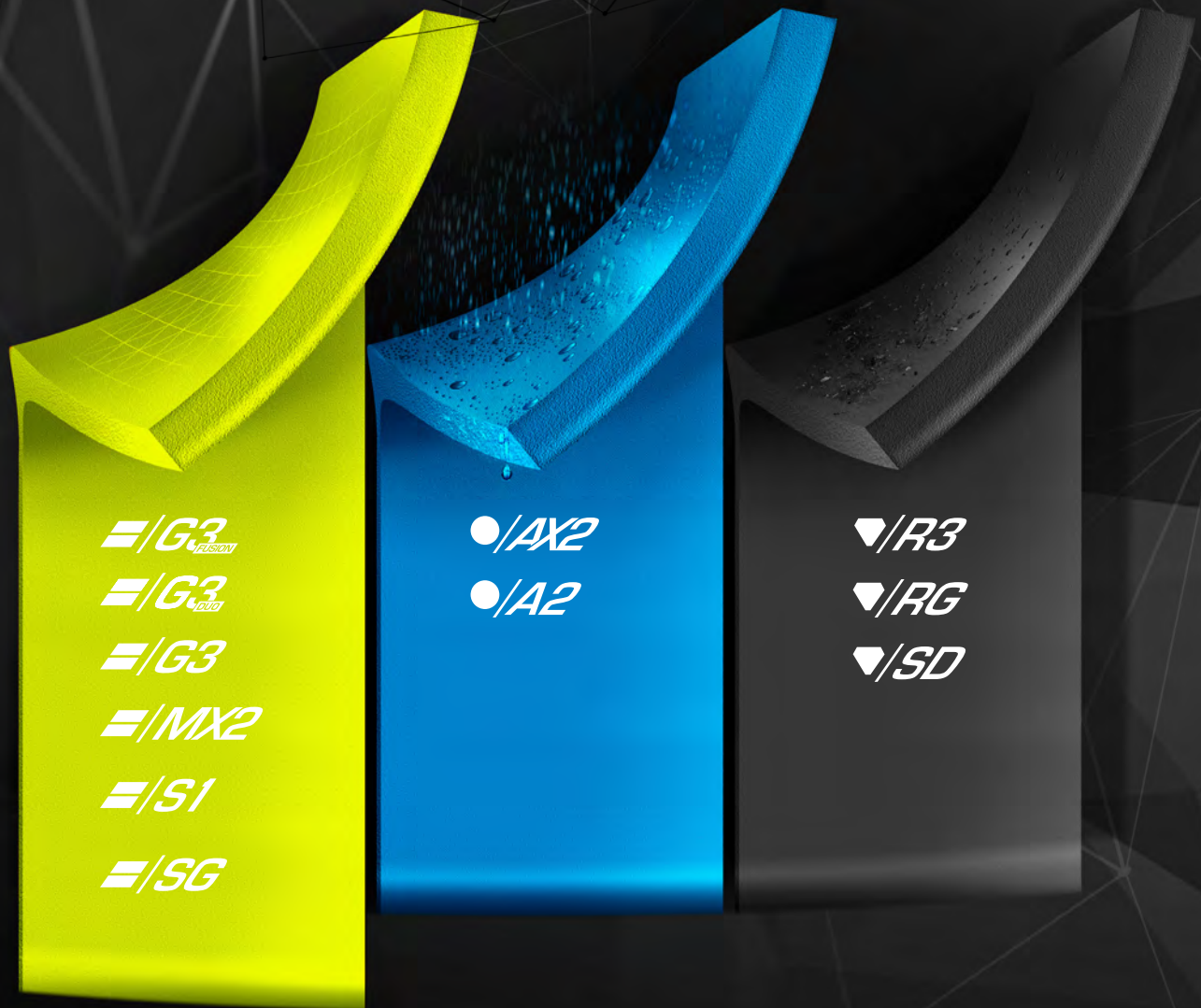


FIT CONTROL **SOLID**

Market Launch: **30th NOVEMBER 2018**
Communication Push: **27th DECEMBER 2018**

THE REUSCH PALM SERIES.

READY TO MASTER ALL CONDITIONS!



=/G3_{FUSION}

=/G3_{PRO}

=/G3

=/MX2

=/S1

=/SG

●/AX2

●/A2

▼/R3

▼/RG

▼/SD

=/SOFT

UNPARALLELED GRIP ON NATURAL GRASS.

If you are looking for grip, don't search any further! The Soft Series is our category of palm foams with the most advanced properties in terms of grip and cushioning, making them our first choice for high-class goalkeeping performances on natural grass. These very soft latex foams are used by the majority of professional Reusch goalkeepers.

●/AQUA

FOR AN EXCEPTIONAL NON- SLIP GRIP IN THE RAIN.

All latex foams work best in a slightly moist condition. When playing in rainy environments a lot of water – way more than needed – gets in contact with the latex. Exactly for these situations we have been developing special Aqua foams for many years. They are characterized by more open-pored structures that absorb more water than regular palms and are so capable to maintain their fullest grip properties even in totally wet conditions.

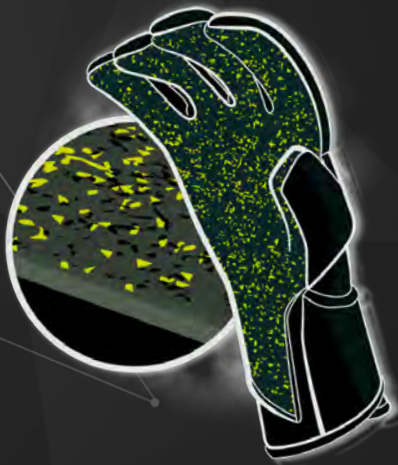
▼/SOLID

THE PERFECT COMBINATION OF DURABILITY AND GRIP.

With the Solid Series we present a range of especially engineered palm foams for goalkeeping on artificial grass and hard grounds. Only perfectly fine-tuned material compositions enable the latex foam to be extremely durable, while still offering high-grade grip properties and so guaranteeing professional goalkeeping on hard and artificial surfaces.

MAXIMIZE YOUR PERFORMANCE

Special demands ask for unique solutions. Based on our extremely tacky G3 Ultra Soft latex, we have engineered three exclusive technologies that boost specific properties of the palm foam, providing the goalkeeper with additional benefits.



G3
FUSION

G3 FUSION

BOOSTS ALL-WEATHER GRIP
& DURABILITY



G3
DUO

G3 DUO

BOOSTS CUSHIONING
& DIRECT BALL FEELING



G3 ULTRA SOFT

The Reusch palm foam with the best grip properties of all times, great cushioning and improved resistance. Including special adhesive additives for an extremely tacky feeling.

SOFT

UNPARALLELED GRIP ON NATURAL GRASS.



/ G3

Maximum grip, maximum stickiness, maximum power: The **G3 ULTRA SOFT** is the Reusch palm foam with the best grip properties of all times, great cushioning and improved resistance. Special adhesive additives make the latex extremely tacky. Ultimate grip properties in dry conditions and very good wet-weather performances turn this palm foam into the first choice of most professional Reusch goalkeepers.

This high quality palm foam is produced in Germany.



/ MX2

A brand new composition of finest, extremely soft natural latex, the **MX2 MEGA GRIP** guarantees professional grip properties in dry and wet conditions as well as very good durability for all goalkeepers looking for uncompromising quality and pure performance.

This high quality palm foam is produced in Germany.



/ S1

As its name implies, the **S1 SUPER SOFT** is one of our softest palm foams, delivering very good results in terms of grip and cushioning as well as reliable abrasion resistance when used on natural grass.

This high quality palm foam is produced in Germany.



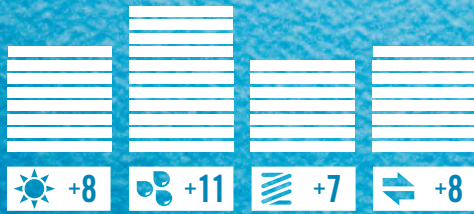
/ SG

The **SG SOFT GRIP** palm foam with reliable grip and damping qualities is especially suited for beginners and comes with a soft and smooth surface for great goalkeeping performances on natural grass.

This high quality palm foam is produced in Germany.

AQUA

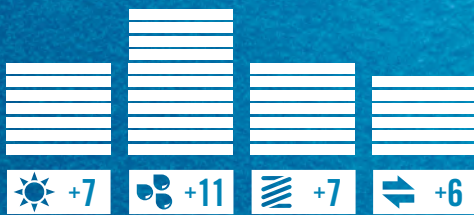
FOR AN EXCEPTIONAL NON-SLIP GRIP IN THE RAIN.



●/AX2

Thanks to the revolutionary Hydrograins™, the extremely soft **AX2 HYDRO GRIP** is our palm foam with the best grip in wet conditions of all times. Activated by warm water, these thermo granulates boost the grip properties in wet conditions to a new level. The Durabond™ Technology increases the abrasion resistance due to special additives strengthening the structure of the latex mixture and so making it absolutely suitable to be used on natural grass as well as on artificial grounds.

This high quality palm foam is produced in Germany.



●/A2

The especially engineered **A2 AQUA TECH** palm especially engineered palm for wet conditions and natural grass stands out with very soft and open-pored latex, guaranteeing outstanding grip in wet but also dry conditions without losing its abrasion resistance. The foam's special composition additionally increases its damping qualities and sturdiness.

This high quality palm foam is produced in Germany.

SOLID

THE PERFECT COMBINATION OF DURABILITY AND GRIP.



▼/R3

The Reusch flagship for professional goalkeeping on artificial and hard surfaces! Thanks to a brand new composition of the latex and the addition of the Durabond™ Technology, the **R3 MEGA SOLID** represents our ultimate balance between being extremely durable while at the same time offering very good grip properties and cushioning.

This high quality palm foam is produced in Germany.



▼/RG

Characterized by very good abrasion resistance and damping properties thanks to its structured and sturdy surface, the **RG RESIST GRIP** is perfectly suited for goalkeeping on artificial and hard grounds.



▼/SD

The **SD SUPER DURABLE** synthetic palm foam with reliable durability is a good choice for prospective goalkeepers and beginners on artificial and hard surfaces.

GLOVE LOVE!

AS HIGHLY TECHNOLOGICAL AND DELICATE PRODUCTS, GOALKEEPER GLOVES DESERVE AND NEED SPECIAL ATTENTION. FOLLOWING SOME BASIC RULES WHEN CHOOSING, PLAYING, CLEANING AND STORING THE GLOVES WILL HELP MAXIMIZING THEIR PERFORMANCE AND DURABILITY.

7 STEPS TO TREAT GOALKEEPER GLOVES RIGHT:



1.

CHOOSE THE RIGHT GLOVES FOR YOUR NEEDS

- Take the gloves that are made for the type of surface you regularly play on and the weather conditions you will face the most.
- Select the palm foam that best corresponds to your needs. Even though all Reusch palms are made of high-quality materials, they differ in terms of grip, cushioning and durability, depending on the material composition of the foam.
- Check the additional features of the glove that can help you improving your performance.
- Decide whether you want finger protection or not.
- Choose your preferred cut.
- Pick the right size.



2.

WASH BEFORE FIRST USE

- Never forget about this! In order to eliminate any remaining soap necessarily used in the production process, the gloves must be cleaned with warm water before first using them.
- Only after this procedure the gloves attain their fullest grip properties.

3.

MOISTEN BEFORE PLAYING

- Rinse Aqua gloves with warm water (preferably between 35–40°C) one to two hours before using them, in order to activate the Hydrograins™ inside the palm foam.
- Moisten all types of goalkeeper gloves before playing.
- Keep the gloves in slightly wet condition during use.



4.

CLEAN AFTER PLAYING

- Wash the gloves with warm water (around 35°C) after playing in order to eliminate dirt that decreases the grip properties of the gloves.
- Do not use aggressive solvents or harsh cleaners.
- Wash by hand and not in the washing machine.
- For a perfectly clean glove, additionally use special glove wash.



5.

DRY SLOWLY

- Let the gloves dry slowly by air.
- Keep away from radiators or other sources of direct heat.



6.

STORE IN APPROPRIATE LOCATION

- Do not expose gloves to UV radiation like intense sun light or light from fluorescent tubes, as this can impair the grip and durability of the latex layer.
- Store the gloves in a cool, dark and dry place.
- Goalie bags are the perfect storage items for your gloves.

7.

USE UNTIL COMPLETELY WORN-OUT

- Very soft palm foams can show first signs of usage already after a small period of use.
- The performance and the grip properties of the glove remain untouched until the palm is totally worn out.

Watch our care instructions video



GLOVE CUTS

THE CUT DECIDES ABOUT THE BALL CONTROL, THE CATCHING ABILITY AND THE WEARING COMFORT OF A GOALKEEPER GLOVE. REUSCH OFFERS FIVE FINGER CUTS WITH VERY DISTINCTIVE CHARACTERISTICS IN ORDER TO SATISFY ALL DIFFERENT NEEDS AND TASTES.



EXPANSE CUT

Outer seams enlarge the palm surface of this flat cut and so increase the latex-to-ball contact area.



ROLL FINGER

The latex is seamlessly rolled around the fingers, providing the largest possible catching area.



NEGATIVE CUT

This inner-seam construction is characterized by a very tight fit, generating great tactility and outstanding ball control.



EVOLUTION CUT

The latex is seamlessly rolled around the fingertips for a tight fit, best ball control and maximized latex-to-ball contact area. An outer-seam construction in the lower finger parts offers an ergonomic fit, breathability, softness and flexibility.



EVOLUTION NEGATIVE CUT

Negatively-stitched version of the Evolution Cut. The latex is seamlessly rolled around the fingertips for a tight fit, best ball control and maximized latex-to-ball contact area. An inner-seam construction in the lower finger parts offers an extremely tight, soft, flexible and ergonomic fit.

FIT CONTROL

GLOVE TECHNOLOGIES

1 SHOCKSHIELD™ ADVANCED

This one-piece punching zone on the backhand of the glove provides the goalkeeper with more safety, advanced protection and better ball control.

2 XRD® TECHNOLOGY

XRD® Extreme Impact Protection is engineered to absorb maximum shock, yet designed for a lightweight comfortable fit.

3 EXPANDED FINGER TIPS EFT™

Maximizing the palm around the finger tips ensures the biggest possible latex-to-ball contact area and so guarantees an even better control when catching the ball.

4 ERGONOMIC SUPPORT SYSTEM ESS™

The anatomical shape of the glove and the pre-spreaded fingers enhance the glove's wearing comfort and support a natural catching position. The palm latex covering the side of the palm area nearly to the backhand provides an optimized fit. It can either be "Rolled" on the small finger side or "Dual Rolled" on both small finger and index finger side.

5 ORTHO-TEC™

This variable and effective finger protection system reduces the risk of injury. The individually removable sticks totally adapt the shape of the fingers. All fingers can grasp flexibly without restrictions and with no additional force, whereas bending the fingers backward into the injury zone is close to impossible.

FINGER SUPPORT™

The light version of our finger protection technology equips all protection styles of the entry price segment. It is firmly fixed and increases the stabilization of the fingers.

6 ROLLED THUMB™

The palm latex is extended around the inner side of the thumb nearly up to the backhand. The palm gets evidently enlarged, putting the thumb in a highly functional 3D-shape.

7 PRO FLEX™

A horizontal 4-way stretch insert keeps the backhand extremely flexible in all directions.

8 KEEP CONTROL™

The upper third of the pinky finger sidewall is covered with palm latex. This prevents the ball from slipping and enhances the control when throwing it.

9 AIRVENTSYSTEM™

Provides maximum ventilation inside the glove. Highly breathable mesh material ensures optimum air circulation within the glove.

10 COMFORT TIPS™

Silicone dots on the inside of the glove's finger tips maximize the contact between hand and glove for best ball control.

11 ERGONOMIC PALM EMBOSSING

Embossments following the natural lines of the hand support the natural grasping movement, providing high flexibility and maximum ball control with unaltered grip qualities.

12 DURALOOP™

Durability, grip, fixation: The DuraLoop™ patch offers extra abrasion resistance and durability in the most stressed zone of the palm, significantly enlarges the glove's latex area for best grip and additionally enables an easy entrance into the glove.

13 DURAGUARD™

The DuraGuard™ latex patch offers extra abrasion resistance and durability in the most stressed zone of the palm.

14 WRISTGUARD™

A latex patch positioned in the most stressed area underneath the bandage protects the wrist when falling on hard surfaces.

15 3D THUMB CROTCH™

This rolled crotch construction between thumb and index finger avoids any bothering seams in this highly loaded zone of the glove, supporting an ergonomic fit and best wearing comfort.





SAMIR HANDANOVIĆ | FC Internazionale / Serie A / Italy

 **SOFT**

**TAILORED
PRECISION.**

**UNPARALLELED GRIP
ON NATURAL GRASS.**

FIT CONTROL SUPREME G3 FUSION ORTHO-TEC | 39 70 991



airVENT EFT ESS
DURALOOP PROFLEX SHOCKSHIELD
ORTHOTEC PALMEMBOSSING KEEP CONTROL™



39 70 991 FIT CONTROL SUPREME G3 FUSION ORTHO-TEC

- PALM** G3 Fusion
- CUT** Dual Rolled Expanse Cut ESS™
- WRIST CLOSURE** Long elastic cuff with DuraLoop™, half elastic strap with textile window and rubber ender
- BACKHAND** Pro Latex, XRD® Extreme Impact Pads
- FEATURES** Removable Ortho-Tec™ Finger & Thumb Protection with Zipper Pocket and Ortho-Tec™ Tool Kit, Pro Flex™, Expanded Finger Tips™, Comfort Tips™, Shockshield™ Advanced, Ergonomic Palm Embossing, AirVentSystem™, ESS™, 3D Thumb Crotch™, Rolled Thumb™, Keep Control™, DuraLoop™
- PACKAGING** Blisterbag
- SIZES** 7,5 - 11 (+12)



583 lime/safety yellow/lime

FIT CONTROL DELUXE G3 FUSION EVOLUTION ORTHO-TEC | 39 70 958

airVENT ESS PROFLEX DURAGUARD
ORTHOTEC PALMEMBOSSING



39 70 958 FIT CONTROL DELUXE G3 FUSION EVOLUTION ORTHO-TEC

- PALM** G3 Fusion
- CUT** Evolution Cut ESS™
- WRIST CLOSURE** Long elastic cuff with Pull Loop™, full strap with textile window and rubber ender
- BACKHAND** Pro Latex
- FEATURES** Removable Ortho-Tec™ Finger & Thumb Protection with Zipper Pocket and Ortho-Tec™ Tool Kit, Pro Flex™, Ergonomic Palm Embossing, AirVentSystem™, ESS™, 3D Thumb Crotch™, Rolled Thumb™, DuraGuard™
- PACKAGING** Blisterbag
- SIZES** 7,5 - 11 (+12)



883 blue/lime/lime

39 70 950 | FIT CONTROL PRO G3 ORTHO-TEC



583 lime/safety yellow/lime

39 70 950 FIT CONTROL PRO G3 ORTHO-TEC

PALM	G3 Ultra Soft
CUT	Rolled Expanse Cut ESS™
WRIST CLOSURE	Long elastic cuff with Pull Loop™, full strap with textile window and rubber ender
BACKHAND	Pro Latex
FEATURES	Removable Ortho-Tec™ Finger & Thumb Protection with Zipper Pocket and Ortho-Tec™ Tool Kit, Pro Flex™, AirVentSystem™, ESS™, 3D Thumb Crotch™, Rolled Thumb™, Keep Control™
PACKAGING	Blisterbag
SIZES	7,5 - 11 (+12)

39 70 938 | FIT CONTROL G3 FUSION EVOLUTION FINGER SUPPORT



583 lime/safety yellow/lime

39 70 938 FIT CONTROL G3 FUSION EVOLUTION FINGER SUPPORT

PALM	G3 Fusion
CUT	Evolution Cut ESS™
WRIST CLOSURE	Standard elastic cuff, full strap with textile window
BACKHAND	Latex
FEATURES	Reusch Finger Support™, AirVentSystem™, ESS™, 3D Thumb Crotch™, Rolled Thumb™
PACKAGING	Softbag
SIZES	7,5 - 11 (+12)

39 70 936 | FIT CONTROL G3 NEGATIVE CUT FINGER SUPPORT



883 blue/lime/lime

39 70 936 FIT CONTROL G3 NEGATIVE CUT FINGER SUPPORT

PALM	G3 Ultra Soft
CUT	Negative Cut
WRIST CLOSURE	Standard elastic cuff with Pull Loop™, full strap with textile window
BACKHAND	Latex
FEATURES	Reusch Finger Support™, 3D Thumb Crotch™
PACKAGING	Softbag
SIZES	7,5 - 11 (+12)

FIT CONTROL MX2 FINGER SUPPORT | 39 70 130

airVENT DURAGUARD FINGERSUPPORT



39 70 130 FIT CONTROL MX2 FINGER SUPPORT

- PALM MX2 Mega Grip
- CUT Expanse Cut
- WRIST CLOSURE Standard elastic cuff, full strap with textile window
- BACKHAND Punch Foam
- FEATURES Reusch Finger Support™, AirVentSystem™, 3D Thumb Crotch™, Rolled Thumb™, DuraGuard™
- PACKAGING Softbag
- SIZES 7,5 - 11 (+12)



583 lime/safety yellow/lime

FIT CONTROL S1 EVOLUTION FINGER SUPPORT | 39 70 238

airVENT DURAGUARD FINGERSUPPORT



39 70 238 FIT CONTROL S1 EVOLUTION FINGER SUPPORT

- PALM S1 Super Soft
- CUT Evolution Cut ESSTM
- WRIST CLOSURE Standard elastic cuff, full strap with textile window
- BACKHAND Latex
- FEATURES Reusch Finger Support™, AirVentSystem™, ESSTM, 3D Thumb Crotch™, Rolled Thumb™, DuraGuard™
- PACKAGING Softbag
- SIZES 7,5 - 11 (+12)



583 lime/safety yellow/lime

FIT CONTROL S1 FINGER SUPPORT | 39 70 230

airVENT DURAGUARD FINGERSUPPORT



39 70 230 FIT CONTROL S1 FINGER SUPPORT

- PALM S1 Super Soft
- CUT Expanse Cut
- WRIST CLOSURE Standard elastic cuff, full strap with textile window
- BACKHAND Punch Foam
- FEATURES Reusch Finger Support™, AirVentSystem™, 3D Thumb Crotch™, Rolled Thumb™, DuraGuard™
- PACKAGING Softbag
- SIZES 7,5 - 11 (+12)



583 lime/safety yellow/lime

FIT CONTROL SOFT SERIES FINGER SUPPORT

39 70 830 | FIT CONTROL SG EXTRA FINGER SUPPORT



583 lime/safety yellow/lime



883 blue/lime/lime

airVENT DURAGUARD FINGERSUPPORT™



39 70 830 FIT CONTROL SG EXTRA FINGER SUPPORT

PALM	SG Soft Grip
CUT	Expanse Cut
WRIST CLOSURE	Elastic wrist bandage, full strap
BACKHAND	PVC
FEATURES	Reusch Finger Support™, AirVentSystem™, Thumbflex™, DuraGuard™
PACKAGING	Softbag
SIZES	7,5 - 11

39 70 810 | FIT CONTROL SG FINGER SUPPORT



588 lime/safety yellow



888 blue/lime

FINGERSUPPORT™



39 70 810 FIT CONTROL SG FINGER SUPPORT

PALM	SG Soft Grip
CUT	Expanse Cut
WRIST CLOSURE	Elastic wrist bandage, full strap
BACKHAND	PVC
FEATURES	Reusch Finger Support™, Thumbflex™
PACKAGING	Polybag
SIZES	7,5 - 11

39 70 610 | FIT CONTROL RG FINGER SUPPORT



588 lime/safety yellow



888 blue/lime

FINGERSUPPORT™



39 70 610 FIT CONTROL RG FINGER SUPPORT

PALM	RG Resist Grip
CUT	Expanse Cut
WRIST CLOSURE	Elastic wrist bandage, full strap
BACKHAND	PVC
FEATURES	Reusch Finger Support™, Thumbflex™
PACKAGING	Polybag
SIZES	7,5 - 11

FIT CONTROL SUPREME G3 FUSION | 39 70 993



airVENT EFT ESS
DURALOOP PROFLEX SHOCKSHIELD
PALMEMBOSSING KEEP CONTROL™



39 70 993 FIT CONTROL SUPREME G3 FUSION

- PALM** G3 Fusion
- CUT** Dual Rolled Expanse Cut ESS™
- WRIST CLOSURE** Long elastic cuff with DuraLoop™, half elastic strap with textile window and rubber ender
- BACKHAND** Pro Latex, XRD® Extreme Impact Pads
- FEATURES** Pro Flex™, Expanded Finger Tips™, Comfort Tips™, Shockshield™ Advanced, Ergonomic Palm Embossing, AirVentSystem™, ESS™, 3D Thumb Crotch™, Rolled Thumb™, Keep Control™, DuraLoop™
- PACKAGING** Blisterbag
- SIZES** 7,5 - 11 (+12)



583 lime/safety yellow/lime

FIT CONTROL DELUXE G3 FUSION EVOLUTION | 39 70 959

airVENT ESS PROFLEX DURAGUARD



39 70 959 FIT CONTROL DELUXE G3 FUSION EVOLUTION

- PALM** G3 Fusion
- CUT** Evolution Cut ESS™
- WRIST CLOSURE** Long elastic cuff with Pull Loop™, full strap with textile window and rubber ender
- BACKHAND** Pro Latex
- FEATURES** Pro Flex™, Ergonomic Palm Embossing, AirVentSystem™, ESS™, 3D Thumb Crotch™, Rolled Thumb™, DuraGuard™
- PACKAGING** Blisterbag
- SIZES** 7,5 - 11 (+12)



883 blue/lime/lime

FIT CONTROL SOFT SERIES

39 70 055 | FIT CONTROL PRO G3 DUO



583 lime/safety yellow/lime

airVENT ESS DUOGRIP
PROFLEX KEEP CONTROL™

**39 70 055 FIT CONTROL PRO G3 DUO**

PALM	G3 Duo
CUT	Rolled Expanse Cut ESST™
WRIST CLOSURE	Standard elastic cuff with Pull Loop™, full strap with textile window and rubber ender
BACKHAND	Pro Latex
FEATURES	Pro Flex™, AirVentSystem™, ESS™, 3D Thumb Crotch™, Rolled Thumb™, Keep Control™
PACKAGING	Blisterbag
SIZES	7,5 - 11

39 70 955 | FIT CONTROL PRO G3



583 lime/safety yellow/lime

airVENT ESS
PROFLEX KEEP CONTROL™

**39 70 955 FIT CONTROL PRO G3**

PALM	G3 Ultra Soft
CUT	Rolled Expanse Cut ESST™
WRIST CLOSURE	Long elastic cuff with Pull Loop™, full strap with textile window and rubber ender
BACKHAND	Pro Latex
FEATURES	Pro Flex™, AirVentSystem™, ESS™, 3D Thumb Crotch™, Rolled Thumb™, Keep Control™
PACKAGING	Blisterbag
SIZES	7,5 - 11 (+12)

39 70 956 | FIT CONTROL PRO G3 NEGATIVE CUT



883 blue/lime/lime

PROFLEX

**39 70 956 FIT CONTROL PRO G3 NEGATIVE CUT**

PALM	G3 Ultra Soft
CUT	Negative Cut
WRIST CLOSURE	Standard elastic cuff with Pull Loop™, full strap with textile window and rubber ender
BACKHAND	Pro Latex
FEATURES	Pro Flex™, 3D Thumb Crotch™
PACKAGING	Blisterbag
SIZES	7,5 - 11 (+12)

FIT CONTROL G3 FUSION EVOLUTION | 39 70 939



39 70 939 FIT CONTROL G3 FUSION EVOLUTION

- PALM G3 Fusion
- CUT Evolution Cut ESS™
- WRIST CLOSURE Standard elastic cuff, full strap
- BACKHAND Latex
- FEATURES AirVentSystem™, ESS™, 3D Thumb Crotch™, Rolled Thumb™
- PACKAGING Softbag
- SIZES 7,5 - 11



583 lime/safety yellow/lime

FIT CONTROL G3 ROLL FINGER | 39 70 937



39 70 937 FIT CONTROL G3 ROLL FINGER

- PALM G3 Ultra Soft
- CUT Roll Finger ESS™
- WRIST CLOSURE Standard elastic cuff, full strap with textile window
- BACKHAND Latex
- FEATURES ESS™, 3D Thumb Crotch™, Rolled Thumb™
- PACKAGING Softbag
- SIZES 7,5 - 11



583 lime/safety yellow/lime

FIT CONTROL MX2 | 39 70 135



39 70 135 FIT CONTROL MX2

- PALM MX2 Mega Grip
- CUT Expanse Cut
- WRIST CLOSURE Standard elastic cuff, full strap with textile window
- BACKHAND Punch Foam
- FEATURES AirVentSystem™, 3D Thumb Crotch™, Rolled Thumb™, DuraGuard™
- PACKAGING Softbag
- SIZES 7,5 - 11



583 lime/safety yellow/lime

FIT CONTROL SOFT SERIES

39 70 239 | FIT CONTROL S1 EVOLUTION



583 lime/safety yellow/lime



883 blue/lime/lime

airVENT ESS DURAGUARD

**39 70 239 FIT CONTROL S1 EVOLUTION**

PALM S1 Super Soft
CUT Evolution Cut ESS™
WRIST CLOSURE Standard elastic cuff, full strap
BACKHAND Latex
FEATURES AirVentSystem™, ESS™, 3D Thumb Crotch™, Rolled Thumb™, DuraGuard™
PACKAGING Softbag
SIZES 7,5 - 11

39 70 237 | FIT CONTROL S1 ROLL FINGER



583 lime/safety yellow/lime

ESS DURAGUARD

**39 70 237 FIT CONTROL S1 ROLL FINGER**

PALM S1 Super Soft
CUT Roll Finger ESS™
WRIST CLOSURE Standard elastic cuff, full strap with textile window
BACKHAND Latex
FEATURES ESS™, 3D Thumb Crotch™, Rolled Thumb™, DuraGuard™
PACKAGING Softbag
SIZES 7,5 - 11

39 70 235 | FIT CONTROL S1



583 lime/safety yellow/lime



883 blue/lime/lime

airVENT DURAGUARD

**39 70 235 FIT CONTROL S1**

PALM S1 Super Soft
CUT Expanse Cut
WRIST CLOSURE Standard elastic cuff, full strap
BACKHAND Punch Foam
FEATURES AirVentSystem™, 3D Thumb Crotch™, Rolled Thumb™, DuraGuard™
PACKAGING Softbag
SIZES 7,5 - 11

FIT CONTROL SG EXTRA | 39 70 835



39 70 835 FIT CONTROL SG EXTRA

- PALM SG Soft Grip
- CUT Expanse Cut
- WRIST CLOSURE Standard elastic cuff, full strap
- BACKHAND PVC
- FEATURES AirVentSystem™, Thumbflex™, DuraGuard™
- PACKAGING Softbag
- SIZES 7,5 - 11



888 blue/lime



583 lime/safety yellow/lime

FIT CONTROL SG | 39 70 815



39 70 815 FIT CONTROL SG

- PALM SG Soft Grip
- CUT Expanse Cut
- WRIST CLOSURE Standard elastic cuff, full strap
- BACKHAND PVC
- FEATURES AirVentSystem™, Thumbflex™
- PACKAGING Softbag
- SIZES 7,5 - 11



888 blue/lime



588 lime/safety yellow

FIT CONTROL RG | 39 70 615



39 70 615 FIT CONTROL RG

- PALM RG Resist Grip
- CUT Expanse Cut
- WRIST CLOSURE Standard elastic cuff, full strap
- BACKHAND PVC
- FEATURES Thumbflex™
- PACKAGING Polybag
- SIZES 7,5 - 11



888 blue/lime



588 lime/safety yellow

FIT CONTROL SD | 39 70 515

LATEX FREE



39 70 515 FIT CONTROL SD

- PALM SD Super Durable
- CUT Expanse Cut
- WRIST CLOSURE Standard elastic cuff, full strap
- BACKHAND PVC
- FEATURES Thumbflex™
- PACKAGING Polybag
- SIZES 7,5 - 11



704 black/lime green



888 blue/lime



588 lime/safety yellow



● AQUA

FOR AN EXCEPTIONAL NON-SLIP GRIP IN THE RAIN.

39 70 459 | FIT CONTROL PRO AX2 EVOLUTION NC



121 white/aqua blue/aqua blue

ESS

PROFLEX ASYMMETRICCLIFF WINDPROOF

● AX2    

39 70 459 FIT CONTROL PRO AX2 EVOLUTION NC

- PALM AX2 Hydro Grip
- CUT Evolution Negative Cut ESS™
- WRIST CLOSURE Neoprene Asymmetric Slip-On Cuff™ with integrated strap and rubber ender
- BACKHAND Pro Latex
- FEATURES Pro Flex™, Extended lower palm area™, Windproof, ESS™, 3D Thumb Crotch™, Rolled Thumb™, Asymmetric Slip-On Cuff™ with integrated strap
- PACKAGING Blisterbag AX2
- SIZES 7,5 - 11 (+12)

FIT CONTROL PRO AX2 ORTHO-TEC | 39 70 450




 ASYMMETRIC CUFF ORTHO-TEC
 KEEP CONTROL™



39 70 450 FIT CONTROL PRO AX2 ORTHO-TEC

- PALM** AX2 Hydro Grip
- CUT** Rolled Expanse Cut ESS™
- WRIST CLOSURE** Asymmetric Slip-On Cuff™, full strap with textile window and rubber ender
- BACKHAND** Pro Latex
- FEATURES** Removable Ortho-Tec™ Finger & Thumb Protection with Zipper Pocket and Ortho-Tec™ Tool Kit, Pro Flex™, AirVentSystem™, ESS™, 3D Thumb Crotch™, Rolled Thumb™, Keep Control™, Asymmetric Slip-On Cuff™
- PACKAGING** Blisterbag AX2
- SIZES** 7,5 - 11 (+12)



121 white/aqua blue/aqua blue

FIT CONTROL PRO AX2 | 39 70 455




 ASYMMETRIC CUFF KEEP CONTROL™



39 70 455 FIT CONTROL PRO AX2

- PALM** AX2 Hydro Grip
- CUT** Rolled Expanse Cut ESS™
- WRIST CLOSURE** Asymmetric Slip-On Cuff™, full strap with textile window and rubber ender
- BACKHAND** Pro Latex
- FEATURES** Pro Flex™, AirVentSystem™, ESS™, 3D Thumb Crotch™, Rolled Thumb™, Keep Control™, Asymmetric Slip-On Cuff™
- PACKAGING** Blisterbag AX2
- SIZES** 7,5 - 11



121 white/aqua blue/aqua blue

FIT CONTROL A2 EVOLUTION | 39 70 439






39 70 439 FIT CONTROL A2 EVOLUTION

- PALM** A2 Aqua Tech
- CUT** Evolution Cut ESS™
- WRIST CLOSURE** Standard elastic cuff, full strap with textile window
- BACKHAND** Latex
- FEATURES** AirVentSystem™, ESS™, 3D Thumb Crotch™, Rolled Thumb™
- PACKAGING** Softbag
- SIZES** 7,5 - 11



111 white/aqua blue

▼ SOLID

**THE PERFECT
COMBINATION
OF DURABILITY
AND GRIP.**



FIT CONTROL R3 FINGER SUPPORT | 39 70 730



775 black/fire red/black

airVENT DURAGUARD FINGERSUPPORT



39 70 730 FIT CONTROL R3 FINGER SUPPORT

- PALM R3 Mega Solid
- CUT Expanse Cut
- WRIST CLOSURE Standard elastic cuff, full strap with textile window
- BACKHAND Latex
- FEATURES Reusch Finger Support™, AirVentSystem™, Thumbflex™, DuraGuard™
- PACKAGING Softbag
- SIZES 7,5 - 11 (+12)

FIT CONTROL R6 FINGER SUPPORT | 39 70 610



705 black/fire red

FINGERSUPPORT



39 70 610 FIT CONTROL R6 FINGER SUPPORT

- PALM RG Resist Grip
- CUT Expanse Cut
- WRIST CLOSURE Elastic wrist bandage, full strap
- BACKHAND PVC
- FEATURES Reusch Finger Support™, Thumbflex™
- PACKAGING Polybag
- SIZES 7,5 - 11

34 **FIT CONTROL**
SOLID SERIES

39 70 755 | **FIT CONTROL PRO R3**



775 black/fire red/black

airVENT **ESS** **KEEP CONTROL™**
PROFLEX **DURAGUARD** **WRISTGUARD**



39 70 755 FIT CONTROL PRO R3

- PALM** R3 Mega Solid
- CUT** Rolled Expanse Cut ESS™
- WRIST CLOSURE** Long elastic cuff with Pull Loop™, full strap with textile window and rubber ender
- BACKHAND** Pro Latex
- FEATURES** Pro Flex™, AirVentSystem™, ESS™, 3D Thumb Crotch™, Rolled Thumb™, Keep Control™, DuraGuard™, WristGuard™
- PACKAGING** Blisterbag
- SIZES** 7,5 - 11

39 70 735 | **FIT CONTROL R3**



775 black/fire red/black

airVENT **DURAGUARD**



39 70 735 FIT CONTROL R3

- PALM** R3 Mega Solid
- CUT** Expanse Cut
- WRIST CLOSURE** Standard elastic cuff, full strap with textile window
- BACKHAND** Latex
- FEATURES** AirVentSystem™, Thumbflex™, DuraGuard™
- PACKAGING** Softbag
- SIZES** 7,5 - 11

FIT CONTROL RG | 39 70 615



705 black/fire red



39 70 615 FIT CONTROL RG

- PALM RG Resist Grip
- CUT Expanse Cut
- WRIST CLOSURE Standard elastic cuff, full strap
- BACKHAND PVC
- FEATURES Thumbflex™
- PACKAGING Polybag
- SIZES 7,5 - 11

FIT CONTROL SD | 39 70 515



705 black/fire red

LATEX FREE



39 70 515 FIT CONTROL SD

- PALM SD Super Durable
- CUT Expanse Cut
- WRIST CLOSURE Standard elastic cuff, full strap
- BACKHAND PVC
- FEATURES Thumbflex™
- PACKAGING Polybag
- SIZES 7,5 - 11

JUNIOR

PREMIUM QUALITY FOR TOMORROW'S HEROES!

39 72 950 | FIT CONTROL PRO G3 ORTHO-TEC JUNIOR



583 lime/safety yellow/lime

AIRVENT **ESS** **ORTHO-TEC**

/G3 ✖ ✖ ✖ ✖
+12 +8 +9 +7

39 72 950 FIT CONTROL PRO G3 ORTHO-TEC JUNIOR

- PALM** G3 Ultra Soft
- CUT** Rolled Expanse Cut ESST[™]
- WRIST CLOSURE** Standard elastic cuff with Pull Loop[™], full strap with textile window and rubber ender
- BACKHAND** Pro Latex
- FEATURES** Removable Ortho-Tec[™] Finger & Thumb Protection with Zipper Pocket, AirVentSystem[™], ESST[™], Thumbflex[™], Rolled Thumb[™]
- PACKAGING** Blisterbag
- SIZES** 5 - 8

FIT CONTROL S1 EVOLUTION FINGER SUPPORT JUNIOR | 39 72 238

airVENT **ESS**
 DURAGUARD • FINGERSUPPORT™

/S1  +7 +4 +5 +6

39 72 238 FIT CONTROL S1 EVOLUTION FINGER SUPPORT JUNIOR

- PALM S1 Super Soft
- CUT Evolution Cut ESST™
- WRIST CLOSURE Standard elastic cuff, full strap
- BACKHAND Punch Foam
- FEATURES Reusch Finger Support™, AirVentSystem™, ESST™, 3D Thumb Crotch™, Rolled Thumb™, DuraGuard™
- PACKAGING Softbag
- SIZES 4 - 8



583 lime/safety yellow/lime



883 blue/lime/lime

FIT CONTROL S1 FINGER SUPPORT JUNIOR | 39 72 230

airVENT **DURAGUARD** • FINGERSUPPORT™

/S1  +7 +4 +5 +6

39 72 230 FIT CONTROL S1 FINGER SUPPORT JUNIOR

- PALM S1 Super Soft
- CUT Expanse Cut
- WRIST CLOSURE Standard elastic cuff, full strap
- BACKHAND Punch Foam
- FEATURES AirVentSystem™, 3D Thumb Crotch™, Rolled Thumb™, DuraGuard™
- PACKAGING Softbag
- SIZES 4 - 8



583 lime/safety yellow/lime



883 blue/lime/lime

FIT CONTROL SG EXTRA FINGER SUPPORT JUNIOR | 39 72 830

airVENT **DURAGUARD** • FINGERSUPPORT™

/SG  +6 +4 +4 +5

39 72 830 FIT CONTROL SG EXTRA FINGER SUPPORT JUNIOR

- PALM SG Soft Grip
- CUT Expanse Cut
- WRIST CLOSURE Standard cuff, full strap
- BACKHAND PVC
- FEATURES Reusch Finger Support™, AirVentSystem™, Thumbflex™, DuraGuard™
- PACKAGING Softbag
- SIZES 4 - 8



583 lime/safety yellow/lime



883 blue/lime/lime

FIT CONTROL SG FINGER SUPPORT JUNIOR | 39 72 810

• FINGERSUPPORT™

/SG  +6 +4 +4 +5

39 72 810 FIT CONTROL SG FINGER SUPPORT JUNIOR

- PALM SG Soft Grip
- CUT Expanse Cut
- WRIST CLOSURE Standard cuff, full strap
- BACKHAND PVC
- FEATURES Reusch Finger Support™, Thumbflex™
- PACKAGING Polybag
- SIZES 4 - 8



588 lime/safety yellow



888 blue/lime/lime

FIT CONTROL JUNIOR SOFT SERIES

39 72 955 | FIT CONTROL PRO G3 JUNIOR



583 lime/safety yellow/lime

airVENT ESS PRO FLEX

39 72 955 FIT CONTROL PRO G3 JUNIOR

PALM G3 Ultra Soft
CUT Rolled Expanse Cut ESS™
WRIST CLOSURE Standard elastic cuff with Pull Loop™, full strap with textile window and rubber ender
BACKHAND Pro Latex
FEATURES Pro Flex™, AirVentSystem™, ESS™, Thumbflex™, Blisterbag™
PACKAGING Blisterbag
SIZES 5 - 7,5

39 72 239 | FIT CONTROL S1 EVOLUTION JUNIOR



583 lime/safety yellow/lime



883 blue/lime/lime

airVENT ESS DURAGUARD

39 72 239 FIT CONTROL S1 EVOLUTION JUNIOR

PALM S1 Super Soft
CUT Evolution Cut ESS™
WRIST CLOSURE Standard elastic cuff, full strap
BACKHAND Punch Foam
FEATURES AirVentSystem™, ESS™, 3D Thumb Crotch™, Rolled Thumb™, DuraGuard™
PACKAGING Softbag
SIZES 4 - 7,5

39 72 217 | FIT CONTROL S1 ROLL FINGER JUNIOR



583 lime/safety yellow/lime



883 blue/lime/lime

ESS DURAGUARD

39 72 217 FIT CONTROL S1 ROLL FINGER JUNIOR

PALM S1 Super Soft
CUT Roll Finger ESS™
WRIST CLOSURE Standard cuff, full strap
BACKHAND PVC
FEATURES Thumbflex™, DuraGuard™
PACKAGING Softbag
SIZES 4 - 8

FIT CONTROL S1 JUNIOR | 39 72 215

airVENT DURAGUARD

/S1    

39 72 215 FIT CONTROL S1 JUNIOR

- PALM S1 Super Soft
- CUT Expanse Cut
- WRIST CLOSURE Standard cuff, full strap
- BACKHAND PVC
- FEATURES AirVentSystem™, Thumbflex™, DuraGuard™
- PACKAGING Softbag
- SIZES 3 - 8



FIT CONTROL SG EXTRA JUNIOR | 39 72 835

airVENT DURAGUARD

/SG    

39 72 835 FIT CONTROL SG EXTRA JUNIOR

- PALM SG Soft Grip
- CUT Expanse Cut
- WRIST CLOSURE Standard cuff, full strap
- BACKHAND PVC
- FEATURES AirVentSystem™, Thumbflex™, DuraGuard™
- PACKAGING Polybag
- SIZES 3 - 8



FIT CONTROL SG JUNIOR | 39 72 815

/SG    

39 72 815 FIT CONTROL SG JUNIOR

- PALM SG Soft Grip
- CUT Expanse Cut
- WRIST CLOSURE Standard cuff, full strap
- BACKHAND PVC
- FEATURES Thumbflex™
- PACKAGING Polybag
- SIZES 3 - 8



SOLID SERIES FINGER SUPPORT

39 72 610 | FIT CONTROL RG OPEN CUFF FINGER SUPPORT JUNIOR



705 black/fire red



588 lime/safety yellow



888 blue/lime

FINGERSUPPORT



39 72 610 FIT CONTROL RG OPEN CUFF FINGER SUPPORT JUNIOR

PALM	RG Resist Grip
CUT	Expanse Cut
WRIST CLOSURE	Open cuff, full strap
BACKHAND	PVC
FEATURES	Reusch Finger Support™, Thumbflex™
PACKAGING	Polybag
SIZES	4 - 8

39 72 510 | FIT CONTROL SD OPEN CUFF FINGER SUPPORT JUNIOR



705 black/fire red



588 lime/safety yellow



888 blue/lime

FINGERSUPPORT LATEX FREE



39 72 510 FIT CONTROL SD OPEN CUFF FINGER SUPPORT JUNIOR

PALM	SD Super Durable
CUT	Expanse Cut
WRIST CLOSURE	Open cuff, full strap
BACKHAND	PVC
FEATURES	Reusch Finger Support™, Thumbflex™
PACKAGING	Polybag
SIZES	4 - 8

FIT CONTROL R3 JUNIOR | 39 72 735



39 72 735 FIT CONTROL R3 JUNIOR

- PALM R3 Mega Solid
- CUT Expanse Cut
- WRIST CLOSURE Standard elastic cuff, full strap
- BACKHAND Latex
- FEATURES AirVentSystem™, Thumbflex™
- PACKAGING Softbag
- SIZES 4 - 7,5



775 black/lime red/black

FIT CONTROL RG OPEN CUFF JUNIOR | 39 72 615



588 lime/safety yellow



888 blue/lime



705 black/lime red



39 72 615 FIT CONTROL RG OPEN CUFF JUNIOR

- PALM RG Resist Grip
- CUT Expanse Cut
- WRIST CLOSURE Open cuff, full strap
- BACKHAND PVC
- FEATURES Thumbflex™
- PACKAGING Polybag
- SIZES 3 - 8

FIT CONTROL SD OPEN CUFF JUNIOR | 39 72 515



704 black/lime green



588 lime/safety yellow



888 blue/lime



705 black/lime red

LATEX FREE



39 72 515 FIT CONTROL SD OPEN CUFF JUNIOR

- PALM SD Super Durable
- CUT Expanse Cut
- WRIST CLOSURE Open cuff, full strap
- BACKHAND PVC
- FEATURES Thumbflex™
- PACKAGING Polybag
- SIZES 3 - 8

FUTSAL

**HIGH
PERFORMANCE
INDOOR
GLOVES.**

REVUSCH
FUTSAL

REUSCH FUTSAL PRO | 39 70 300



39 70 300 REUSCH FUTSAL PRO

- PALM Silicone
- CUT Negative Cut
- WRIST CLOSURE Elasticated wrist bandage without strap
- BACKHAND Lycra
- FEATURES Silicone print on palm, AirVentSystem™, Thumbflex™
- PACKAGING Polybag
- SIZES 7 - 11 (full sizes)



583 lime/safety yellow/lime

REUSCH FUTSAL PRO 3/4 SFX | 39 70 340



39 70 340 REUSCH FUTSAL PRO 3/4 SFX

- PALM Silicone
- CUT Negative Cut
- WRIST CLOSURE Elasticated wrist bandage without strap
- BACKHAND Lycra
- FEATURES Silicone print on palm, AirVentSystem™, Thumbflex™
- PACKAGING Polybag
- SIZES 7 - 11 (full sizes)



883 blue/lime/lime

REUSCH FUTSAL PRO SFX | 39 70 330



39 70 330 REUSCH FUTSAL PRO SFX

- PALM Silicone
- CUT Negative Cut
- WRIST CLOSURE Elasticated wrist bandage without strap
- BACKHAND Lycra
- FEATURES Silicone print on palm, AirVentSystem™, Thumbflex™
- PACKAGING Polybag
- SIZES 7 - 11 (full sizes)



583 lime/safety yellow/lime

REUSCH FUTSAL SG SFX | 39 70 320



39 70 320 REUSCH FUTSAL SG SFX

- PALM SG Soft Grip
- CUT Negative Cut
- WRIST CLOSURE Elasticated wrist bandage with half strap
- BACKHAND Mesh
- FEATURES AirVentSystem™, Thumbflex™
- PACKAGING Polybag
- SIZES 7 - 11 (full sizes)



583 lime/safety yellow/lime



APPAREL

KEEPING THE PROTECTION, COMFORT AND STYLE FACTOR HIGH!

Characterized by intelligent protection elements, modern fits and durable materials, the high-quality Reusch Goalkeeper Apparel Line is perfectly suited for all training and match situations. A revised range of functional goalkeeper underwear offers must-have pieces of three categories: hard padded, soft padded and highly functional unpadded first layers.

MMS™ MOISTURE MANAGEMENT SYSTEM

MMS™ marks a terminology within functional apparel from Reusch. It's the common purpose of all MMS™ technologies to ensure ideal micro climate conditions to the athlete at any time.

MMS™ is divided into following special fields:

- **MMS™ COOL** is integrated in shirts that have to wick away much moisture from the inside to the outside. Its focus is to keep the body comfortably cool even in extreme conditions.
- **MMS™ COMPRESSION** is used in shirts and shorts that fit tightly to the skin. The special run of the seams and the selection of appropriate material cause an effect of muscle compression, which prevents them from getting tired quickly.
- **MMS™ THERMO** is mostly included in neoprene styles. Especially in winter or in wet conditions it keeps the body warm to avoid muscle strains.

54 **BASE LAYER**
HARD PADDED

37 13 500 | REUSCH CS 3/4 UNDERSHIRT PADDED PRO



704 black/lime green



700 black



37 13 500 REUSCH CS 3/4 UNDERSHIRT PADDED PRO

- FEATURES** MMST™ Compression, four way stretch, elbow / shoulder / chest / hip pads, non-slip silicone waist band, tight fit
MATERIAL High elastic body with breathable mesh inserts and protective hard foam pads. 68% Polyester, 20% EVA, 10% Spandex, 2% Rubber
SIZES S - XXL

37 18 530 | REUSCH CS SHORT PADDED PRO XRD



704 black/lime green



700 black



37 18 530 REUSCH CS SHORT PADDED PRO XRD

- FEATURES** MMST™ Compression, four way stretch, hip pads, elasticated waist with drawcords, tight fit, XRD® Extreme Impact pads
MATERIAL 52% Polyester, 40% Polyurethane, 6% Spandex, 2% Rubber
SIZES XXS - XL

38 17 530 | REUSCH CS FEMUR 3/4 SHORT PADDED



704 black/lime green



38 17 530 REUSCH CS FEMUR 3/4 SHORT PADDED

- FEATURES** MMST™ Compression, four way stretch, Femur protection™ & Knee protection™, elasticated waist with drawcords, tight fit
MATERIAL 58% Polyester, 30% Ethylene-Vinyl Acetate, 10% Spandex, 2% Rubber
SIZES XXS - XXL

REUSCH CS FEMUR SHORT PADDED | 38 18 530



704 black/lime green

mms
COMPRESSION



FEMUR PROTECTION™

38 18 530 REUSCH CS FEMUR SHORT PADDED

- FEATURES** MMS™ Compression, four way stretch, Femur Protection™, elasticated waist with drawcords, tight fit
MATERIAL 53% Polyester, 35% Ethylene-Vinyl Acetate, 10% Spandex, 2% Rubber
SIZES XXS - XXL

REUSCH CS 3/4 SHORT PADDED | 38 17 533



704 black/lime green

mms
COMPRESSION



38 17 533 REUSCH CS 3/4 SHORT PADDED

- FEATURES** MMS™ Compression, four way stretch, knee & hip pads, elasticated waist with drawcords, tight fit
MATERIAL 58% Polyester, 30% Ethylene-Vinyl Acetate, 10% Spandex, 2% Rubber
SIZES XXS - XXL

REUSCH CS SHORT PADDED | 38 18 533



704 black/lime green

mms
COMPRESSION



38 18 533 REUSCH CS SHORT PADDED

- FEATURES** MMS™ Compression, four way stretch, hip pads, elasticated waist with drawcords, tight fit
MATERIAL 53% Polyester, 35% Ethylene-Vinyl Acetate, 10% Spandex, 2% Rubber
SIZES XXS - XXL

56 **BASE LAYER**
SOFT PADDED

34 13 500 | REUSCH 3/4 FUNCTION SHIRT



704 black/lime green



700 black

mms **Compression** **Soft-SHELL**
AWAY STRETCH

34 13 500 REUSCH 3/4 FUNCTION SHIRT

FEATURES MMST™ Compression, four way stretch, elbow pads, elasticated waist with drawcords, tight fit
MATERIAL 52% Polyester, 8% Spandex, 40% Polyurethane
SIZES S - XXL

39 17 520 | REUSCH CS 3/4 SHORT SOFT PADDED



704 black/lime green



700 black

mms **Compression** **Soft-SHELL**
AWAY STRETCH

39 17 520 REUSCH CS 3/4 SHORT SOFT PADDED

FEATURES MMST™ Compression, four way stretch, knee & hip pads, elasticated waist with drawcords, tight fit
MATERIAL 58% Polyester, 30% Polyurethane, 10% Spandex, 2% Rubber
SIZES XXS - XXL

39 18 520 | REUSCH CS SHORT SOFT PADDED



704 black/lime green



700 black

mms **Compression** **Soft-SHELL**
AWAY STRETCH

39 18 520 REUSCH CS SHORT SOFT PADDED

FEATURES MMST™ Compression, four way stretch, hip pads, elasticated waist with drawcords, tight fit
MATERIAL 88% Polyester, 10% Spandex, 2% Rubber
SIZES XXS - XL

REUSCH CS 3/4 SHIRT HYBRID | 38 13 505



38 13 505 REUSCH CS 3/4 SHIRT HYBRID

FEATURES MMS™ Compression, four way stretch, 2.0 mm neoprene elbow reinforcements, non-slip silicone waist band, tight fit
MATERIAL neoprene / lycra hybrid, 78% Polyester, 10% Styrene-Butadiene Rubber, 10% Spandex, 2% Rubber
SIZES XXS - XXL



704 black/lime green

REUSCH CS SHIRT SLEEVELESS | 37 12 505



37 12 505 REUSCH CS SHIRT SLEEVELESS

FEATURES MMS™ Compression, four way stretch, tight fit
MATERIAL 85% Polyester, 10% Spandex, 3% Rubber, 2% Polyamides
SIZES S - XXL



700 black

704 black/lime green

REUSCH CS SHORT HYBRID | 37 18 505



37 18 505 REUSCH CS SHORT HYBRID

FEATURES MMS™ Compression, four way stretch, 1.5mm neoprene hip reinforcements, elasticated waist with drawcords, tight fit
MATERIAL neoprene / lycra hybrid, 65% Polyester, 8% Spandex, 2% Rubber, 5% Polyamides, 20% SBR
SIZES XXS - XL



700 black

704 black/lime green

REUSCH CS SHORT HYBRID 3/4 | 37 17 505



37 17 505 REUSCH CS SHORT HYBRID 3/4

FEATURES MMS™ Compression, four way stretch, 1.5mm neoprene hip reinforcements, elasticated waist with drawcords, tight fit
MATERIAL neoprene / lycra hybrid, 60% Polyester, 8% Spandex, 2% Rubber, 10% Polyamides, 20% SBR
SIZES XXS - XL



700 black

704 black/lime green

58 MATCH LINE

39 11 300 | REUSCH MATCH PRO LONGSLEEVE PADDED



500 lime green



888 blue/lime



704 black/lime green

mms
GROUP

39 11 300 REUSCH MATCH PRO LONGSLEEVE PADDED

FEATURES MMST™ Cool, elbow pads, slim sfit
MATERIAL 100% Polyester
SIZES S - XXL

39 11 700 | REUSCH MATCH LONGSLEEVE PADDED



500 lime green



888 blue/lime



704 black/lime green

mms
GROUP

39 11 700 REUSCH MATCH LONGSLEEVE PADDED

FEATURES MMST™ Cool, elbow pads, slim sfit
MATERIAL 100% Polyester
SIZES S - XXL

39 18 705 | REUSCH MATCH SHORT



500 lime green



888 blue/lime



704 black/lime green

mms
GROUP

39 18 705 REUSCH MATCH SHORT

FEATURES MMST™ Cool, regular fit
MATERIAL 100% Polyester
SIZES S - XXL

REUSCH GOALKEEPING RAINCOAT | 39 14 500



700 black

mms
PERFORMANCE

39 14 500 REUSCH GOALKEEPING RAINCOAT

FEATURES MMS™ Thermo, airmesh inserts, front zip, hood, regular fit
MATERIAL 100% Polyester
SIZES XXS - XXL

REUSCH PROMO HOODIE | 39 90 110



406 electric blue



704 black/lime green

39 90 110 REUSCH PROMO HOODIE

MATERIAL 65% cotton, 35% polyester
SIZES XXS - XXL

REUSCH PROMO T-SHIRT | 39 90 100



406 electric blue



704 black/lime green

39 90 100 REUSCH PROMO T-SHIRT

MATERIAL 65% cotton, 35% polyester
SIZES XXS - XXL

60 PANTS & SHORTS

38 16 205 | REUSCH CONTEST PANT



38 16 205 REUSCH CONTEST PANT

FEATURES slim fit, knee & hip pads
MATERIAL 100% Polyester
SIZES S - XXL

38 17 205 | REUSCH CONTEST SHORT 3/4



38 17 205 REUSCH CONTEST SHORT 3/4

FEATURES slim fit, knee & hip pads
MATERIAL 100% Polyester
SIZES S - XXL

38 18 205 | REUSCH CONTEST SHORT



38 18 205 REUSCH CONTEST SHORT

FEATURES slim fit, hip pads
MATERIAL 100% Polyester
SIZES S - XXL

37 16 200 | REUSCH STARTER PANT



37 16 200 REUSCH STARTER PANT

FEATURES slim fit, knee & hip pads
MATERIAL 100% Polyester
SIZES S - XXL

33 18 202 | REUSCH STARTER SHORT



33 18 202 REUSCH STARTER SHORT

FEATURES regular fit, hip pads
MATERIAL 100% Polyester
SIZES S - XXL



reusch

62 APPAREL JUNIOR

39 21 300 | REUSCH MATCH PRO LONGSLEEVE PADDED JUNIOR



MMST™

39 21 300 REUSCH MATCH PRO LONGSLEEVE PADDED JUNIOR

FEATURES MMST™ Cool, elbow pads, slim fit
 MATERIAL 100% Polyester
 SIZES XXS - XL Junior

39 28 700 | REUSCH MATCH SHORT PADDED JUNIOR



MMST™

39 28 700 REUSCH MATCH SHORT PADDED JUNIOR

FEATURES MMST™ Cool, hip pads, regular fit
 MATERIAL 100% Polyester
 SIZES XXS - XL Junior

39 40 200 | REUSCH MATCH SET JUNIOR



39 40 200 REUSCH MATCH SET JUNIOR

FEATURES Jersey: Elbow pads, slim fit
 Pants: hip and knee pads, slim fit
 MATERIAL Shirt: 100% Polyester
 Pant: 100% Polyester
 SIZES XXS - XL Junior

38 26 205 | REUSCH CONTEST PANT JUNIOR



700 black

38 26 205 REUSCH CONTEST PANT JUNIOR

FEATURES slim fit, knee & hip pads, foot-straps
MATERIAL 100% Polyester
SIZES XXS - XL Junior

38 27 205 | REUSCH CONTEST SHORT 3/4 JUNIOR



700 black

38 27 205 REUSCH CONTEST SHORT 3/4 JUNIOR

FEATURES slim fit, knee & hip pads
MATERIAL 100% Polyester
SIZES XXS - XL Junior

38 28 205 | REUSCH CONTEST SHORT JUNIOR



700 black

38 28 205 REUSCH CONTEST SHORT JUNIOR

FEATURES slim fit, hip pads
MATERIAL 100% Polyester
SIZES XXS - XL Junior

37 26 200 | REUSCH STARTER PANT JUNIOR



700 black

37 26 200 REUSCH STARTER PANT JUNIOR

FEATURES slim fit, knee & hip pads
MATERIAL 100% Polyester
SIZES XXS - XL Junior

33 28 202 | REUSCH STARTER SHORT JUNIOR



700 black

33 28 202 REUSCH STARTER SHORT JUNIOR

FEATURES regular fit, hip pads
MATERIAL 100% Polyester
SIZES XXS - XL Junior

NEUSCH



REUSCH SUPREME KNEE PROTECTOR SLEEVE | 38 77 506



38 77 506 REUSCH SUPREME KNEE PROTECTOR SLEEVE

- FEATURES** slim fit, non-slip silicone band, XRD® Extreme Impact pads
MATERIAL high performance XRD® Extreme Impact pads, elastane body
SIZES S - M - L - XL



704 black/lime green

REUSCH SUPREME ELBOW PROTECTOR SLEEVE | 38 77 516



38 77 516 REUSCH SUPREME ELBOW PROTECTOR SLEEVE

- FEATURES** slim fit, non-slip silicone band, XRD® Extreme Impact pads
MATERIAL high performance XRD® Extreme Impact pads, elastane body
SIZES S - M - L - XL



704 black/lime green

REUSCH ULTIMATE KNEE GUARD | 36 77 500

36 77 500 REUSCH ULTIMATE KNEE GUARD

- FEATURES** easy entrance loops, silicone print inside
MATERIAL embossed soft foam padding covered with Kevlar® for high abrasion resistance, polyester spandex sleeve for best comfort and performance
SIZES S - M - L - XL



700 black

REUSCH ULTIMATE ELBOW GUARD | 36 77 510

36 77 510 REUSCH ULTIMATE ELBOW GUARD

- FEATURES** easy entrance loops, silicone print inside
MATERIAL embossed soft foam padding covered with Kevlar® for high abrasion resistance, polyester spandex sleeve for best comfort and performance
SIZES S - M - L - XL



700 black

66 PROTECTORS

39 77 501 | REUSCH KNEE PROTECTOR SLEEVE



700 black

39 77 501 REUSCH KNEE PROTECTOR SLEEVE

FEATURES slim fit, light weight, detachable pads
MATERIAL high resistance foam pads, elastane body for perfect fit
SIZES S - M - L - XL

39 77 511 | REUSCH ELBOW PROTECTOR SLEEVE



700 black

39 77 511 REUSCH ELBOW PROTECTOR SLEEVE

FEATURES slim fit, light weight, detachable pads
MATERIAL high resistance foam pads, elastane body for perfect fit
SIZES S - M - L - XL

31 77 504 | REUSCH KNEE PROTECTOR DELUXE



700 black

31 77 504 REUSCH KNEE PROTECTOR DELUXE

FEATURES tight fit, ergonomic moulded padding, double layer impact damping construction for a maximum of comfort, high abrasion resistant outer material
MATERIAL high density foam pads, comfortable knitting sleeve
SIZES S - M - L - XL

31 77 514 | REUSCH ELBOW PROTECTOR DELUXE



700 black

31 77 514 REUSCH ELBOW PROTECTOR DELUXE

FEATURES tight fit, ergonomic moulded padding, double layer impact damping construction for a maximum of comfort, high abrasion resistant outer material
MATERIAL high density foam pads, comfortable knitting sleeve
SIZES S - M - L - XL

REUSCH ACTIVE KNEE PROTECTOR | 39 77 000



760 black/brilliant blue

705 black/fire red

700 black

39 77 000 REUSCH ACTIVE KNEE PROTECTOR

FEATURES tight fit, ergonomic seams
MATERIAL soft density foam pads, comfortable knitting sleeve
SIZES S - M - L - XL



704 black/lime green

REUSCH ACTIVE ELBOW PROTECTOR | 39 77 010



760 black/brilliant blue

705 black/fire red

700 black

39 77 010 REUSCH ACTIVE ELBOW PROTECTOR

FEATURES tight fit, ergonomic seams
MATERIAL soft density foam pads, comfortable knitting sleeve
SIZES S - M - L - XL



704 black/lime green

REUSCH GK COMPRESSION KNEE SUPPORT | 37 77 507



700 black

37 77 507 REUSCH GK COMPRESSION KNEE SUPPORT

FEATURES high performance compression fit, breathable inserts
MATERIAL protective neoprene and high breathable mesh inserts
SIZES S - M - L

REUSCH GK COMPRESSION ELBOW SUPPORT | 37 77 517



700 black

37 77 517 REUSCH GK COMPRESSION ELBOW SUPPORT

FEATURES high performance compression fit, breathable inserts
MATERIAL protective neoprene and high breathable mesh inserts
SIZES S - M - L

68 PROTECTORS

37 77 527 | REUSCH GK COMPRESSION ANKLE SUPPORT



700 black

37 77 527 REUSCH GK COMPRESSION ANKLE SUPPORT

FEATURES high performance compression fit, breathable inserts
MATERIAL protective neoprene and high breathable mesh inserts
SIZES S - M - L

37 77 537 | REUSCH GK COMPRESSION CALF SLEEVE



700 black

37 77 537 REUSCH GK COMPRESSION CALF SLEEVE

FEATURES high performance compression fit, breathable inserts
MATERIAL protective neoprene and high breathable mesh inserts
SIZES S - M - L

36 77 530 | REUSCH GK- PROTECTIVE LINER



700 black

36 77 530 REUSCH GK- PROTECTIVE LINER

FEATURES high performance compression fit, short fingers, knuckle protector, wrist protector
MATERIAL protective neoprene
SIZES S - M - L - XL

31 77 520 | REUSCH GK- WRIST SUPPORT



700 black

31 77 520 REUSCH GK- WRIST SUPPORT

FEATURES high performance compression fit, half thumb
MATERIAL protective neoprene
SIZES S - M - L - XL

31 77 521 | REUSCH GK- WRIST SUPPORT SHORT



700 black

31 77 521 REUSCH GK- WRIST SUPPORT SHORT

FEATURES high performance compression fit, no thumb
MATERIAL protective neoprene
SIZES S - M - L - XL

REUSCH SHINGUARD ALIENATHOR PRO | 39 77 060



EN 13061:2009

39 77 060 REUSCH SHINGUARD ALIENATHOR PRO

- FEATURES** printed shell, inner comfort foam pad, inner backing layer for soft touch, padded ankle sock, upper elastic strap, CE approved
- MATERIAL** high impact resistance PP shell
- SIZES** S - M - L



REUSCH SHINGUARD ALIENATHOR LITE | 39 77 065



EN 13061:2009

39 77 065 REUSCH SHINGUARD ALIENATHOR LITE

- FEATURES** printed shell, inner comfort foam pad, inner backing layer for soft touch, perforated elastic calf sleeve, CE approved
- MATERIAL** high impact resistance PP shell
- SIZES** S - M - L



REUSCH SHINGUARD D-FEND PRO | 39 77 020



EN 13061:2009

39 77 020 REUSCH SHINGUARD D-FEND PRO

- FEATURES** printed shell, inner comfort foam pad, padded ankle sock, upper elastic strap, CE approved
- MATERIAL** high impact resistance PP shell
- SIZES** S - M - L - XL



REUSCH SHINGUARD D-FEND LITE | 39 77 025



EN 13061:2009

39 77 025 REUSCH SHINGUARD D-FEND LITE

- FEATURES** printed shell, inner comfort foam pad, upper and lower elastic strap with buckle, CE approved
- MATERIAL** high impact resistance PP shell
- SIZES** S - M - L - XL



70 ACCESSORIES



39 62 800 | REUSCH GLOVE-WASH



39 62 800 REUSCH GLOVE-WASH

MATERIAL Tenside, soap, Butylphenyl, Methylpropional, Limonene, Linalool, Methylchlorisothiazolinone, Methylisothiazolinone, artificial colours, solubilisator (2009/34/EC Compliant)
SIZES 200 ml foaming spray flask

39 62 801 | DISPLAY GLOVE-WASH



39 62 801 DISPLAY GLOVE-WASH

MATERIAL 230 g/m² carton display for 12 Reusch glove wash bottles
SIZES 156 x 208 x 212/45 mm

39 62 970 | REUSCH KEYRING



583 lime/safety yellow/lime

39 62 970 REUSCH KEYRING

MATERIAL Rubber
SIZES 43 x 63 mm



39 62 972 | REUSCH SOFT KEYRING COMBO PACK



583 lime/safety yellow/lime

39 62 972 REUSCH SOFT KEYRING COMBO PACK

MATERIAL Carton box 300 g/m² + 50 soft PVC Fit Control keyrings packed in small polybags
SIZES 23 x 18 x 7 cm

39 63 010 | REUSCH GOALKEEPING BAG



704 black/lime green



500 lime green

39 63 010 REUSCH GOALKEEPING BAG

FEATURES small single bag with handle, for one pair of gloves
MATERIAL 100% Polyester
SIZES 32 x 18 x 9

37 62 400 | REUSCH GK TOWEL MATCH



704 black/lime green



500 lime green

37 62 400 REUSCH GK TOWEL MATCH

FEATURES 550 g/m² velvety premium cotton towel
MATERIAL 100% cotton with Oeko-Tex-standard 100 / classification 1, environmentally friendly and tested for harmful substances
SIZES 30 x 30 cm

72 ACCESSORIES

37 62 000 | REUSCH NECK WARMER



781 black/green geofo

MMSTM

37 62 000 REUSCH NECK WARMER

FEATURES technical neckwarmer with drawsting, MMSTM Thermo
MATERIAL 95% Polyester, 5% Elastane
SIZES 56 - 58 - 60

38 70 500 | REUSCH FIELD PLAYER GLOVE



700 black

38 70 500 REUSCH FIELD PLAYER GLOVE

FEATURES tight fit, tight cuff, silicone print on palm
MATERIAL 100% Polyester
SIZES 7 - 11 [Full sizes]

26 87 164 | DRYZONE GLOVE



700 black

DRYZONE XTTM

26 87 164 DRYZONE GLOVE

FEATURES super soft and cosy liner glove
MATERIAL Dryzone XT
SIZES 7,5 - 11

48 05 100 | REUSCH HASHTAG



700 black

48 05 100 REUSCH HASHTAG

FEATURES tight fit, tight cuff, silicone print on palm
MATERIAL Stretch fleece
SIZES 6,5 - 11

47 05 109 | REUSCH ASHTON



700 black

47 05 109 REUSCH ASHTON

FEATURES tight fit, tight cuff
MATERIAL Micro fleece
SIZES 6,5 - 11



ARTHISTEC

DURALOOP

Teusich

GLOVE WASH



INSTRUCTIONS FOR USE AND CARE

PALMS

Rinse with warm water before first use to eliminate any soap remains, necessarily used in the production process.

AQUA PALMS

Rinse with warm water (between 35°C and 40°C) one to two hours before the game to activate the Hydrograins™ in the palm. To guarantee best performance of the gloves, it's important to keep the palm moistened during the whole match.

CLEANING

Dirt affects the grip properties of latex palms. Gloves should be regularly washed in warm water (max. 40°C/104°F) and with the Reusch glove wash. Leave to dry slowly, not directly connected to radiators or other sources of heat.

UV LIGHT

UV-light makes latex stiff, porous and brittle. It is recommended not to expose gloves to intense sunlight or light from fluorescent tubes.

The softer the micro fine latex foams, the higher is the grip but also abrasion. However, the functioning properties will remain until the palm is totally worn out.

ISTRUZIONI PER UNA CORRETTA PULIZIA E CONSERVAZIONE

PALMI

Lavare con acqua calda prima del primo uso per eliminare i residui di sapone tipici dei processi produttivi.

PALMI DA BAGNATO:

1-2 ore prima del gioco sciacquare con acqua tiepida (35°C–40°C) per attivare il sistema micro-granulare termico (Hydrograins™). Per assicurare le massime prestazioni è importante che il palmo resti umido durante tutta la partita.

LAVAGGIO

Lo sporco influisce sulle proprietà di presa dei palmi in lattice. I guanti dovrebbero essere quindi lavati in acqua calda (max. 40°C) e con il sapone specifico per guanti Reusch (Glove Wash). Lasciare asciugare lentamente lontano da fonti di calore e caloriferi.

RAGGI UV

I raggi UV irrigidiscono il lattice, lo rendono poroso e friabile. Si consiglia quindi di non esporre i guanti alla luce intensa del sole o alla luce artificiale delle lampade fluorescenti.

Più morbide sono le schiume micro-fini di lattice, maggiore è la presa ma anche l'abrasione. Le proprietà funzionali del guanto vengono comunque mantenute finché il palmo non viene completamente consumato.

GEBRAUCHS- UND PFLEGEHINWEISE

BELÄGE

Vor erstem Gebrauch mit lauwarmem Wasser spülen, um Seifenreste zu entfernen, die zur Produktion notwendig sind.

AQUA-BELÄGE

1-2 Stunden vor dem Spiel mit warmem Wasser (zw. 35°C und 40°C) spülen, um die Thermo-Granulate (Hydrograins™) zu aktivieren. Um volle Leistungsfähigkeit der Handschuhe zu garantieren, muss der Belag zu jeder Zeit im Spiel angefeuchtet bleiben.

REINIGUNG

Schmutz beeinträchtigt die Griffeigenschaften von Latexbelägen. Handschuhe regelmäßig mit warmem Wasser (max. 40°C) und dem Reusch Glove Wash auswaschen. Langsam und nicht unmittelbar an Heizkörpern trocknen.

UV-LICHT

UV-Licht macht den Latex steif, porös und brüchig. Deshalb Handschuhe vor übermäßig viel Sonnenlicht und Licht aus Leuchtstoffröhren schützen.

Je weicher der mikrofein geschäumte Haftschaum, desto besser sind dessen Grip-Eigenschaften, umso höher ist aber auch der natürliche Abriebeffekt. Die funktionalen Eigenschaften bleiben jedoch bis zum völligen Abrieb erhalten.

INSTRUCTIONS POUR L'UTILISATION ET L'ENTRETIEN

PAUMES

Rincer avec de l'eau chaude avant la première utilisation pour éliminer les résidus de savons utilisés dans le processus de production.

MOUSSE AQUA

Les gants doivent être passés sous l'eau (35°C à 40°C) une à deux heures avant le match afin d'activer les Hydrograins™ contenus dans le latex. Ceux-ci agiront comme des ventouses. Il est important de laisser la paume humide pendant toute la durée du match afin qu'elle garde toute son accroche !

NETTOYAGE

La saleté diminue les propriétés de grip du latex. Les gants doivent être régulièrement lavés dans l'eau chaude (maximum 40°C) avec seulement un peu de savon. Laissez sécher lentement les gants. Il est déconseillé de les poser directement sur les radiateurs ou sur d'autres sources de chaleur.

LUMIERE UV

La lumière UV rend le latex raide, poreux et fragile. Il est recommandé de ne pas exposer les gants au soleil ni à la lumière de tubes fluorescents.

Les paumes en latex sont fines et procurent un excellent grip mais résistent peu à l'abrasion. Cependant les propriétés des paumes sont conservées jusqu'à l'usure totale.

Watch our care instructions video



GOALKEEPER GLOVES ADULT

39 70 439	Fit Control A2 Evolution	31
39 70 959	Fit Control Deluxe G3 Fusion Evolution	25
39 70 958	Fit Control Deluxe G3 Fusion Evolution Ortho-Tec	21
39 70 105	Fit Control Freegel MX2	47
39 70 205	Fit Control Freegel S1	47
39 70 939	Fit Control G3 Fusion Evolution	27
39 70 938	Fit Control G3 Fusion Evolution Finger Support	22
39 70 936	Fit Control G3 Negative Cut Finger Support	22
39 70 937	Fit Control G3 Roll Finger	27
39 70 135	Fit Control MX2	27
39 70 130	Fit Control MX2 Finger Support	23
39 70 455	Fit Control Pro AX2	31
39 70 459	Fit Control Pro AX2 Evolution NC	30
39 70 450	Fit Control Pro AX2 Ortho-Tec	31
39 70 955	Fit Control Pro G3	26
39 70 055	Fit Control Pro G3 Duo	26
39 70 956	Fit Control Pro G3 Negative Cut	26
39 70 950	Fit Control Pro G3 Ortho-Tec	22
39 70 978	Fit Control Pro G3 SpeedBump Evolution Ortho-Tec	49
39 70 755	Fit Control Pro R3	34
39 70 735	Fit Control R3	34
39 70 730	Fit Control R3 Finger Support	33
39 70 615	Fit Control RG	29
39 70 615	Fit Control RG	35
39 70 610	Fit Control RG Finger Support	24
39 70 610	Fit Control RG Finger Support	33
39 70 235	Fit Control S1	28
39 70 239	Fit Control S1 Evolution	28
39 70 238	Fit Control S1 Evolution Finger Support	23
39 70 230	Fit Control S1 Finger Support	23
39 70 237	Fit Control S1 Roll Finger	28
39 70 515	Fit Control SD	29
39 70 515	Fit Control SD	35
39 70 815	Fit Control SG	29

39 70 835	Fit Control SG Extra	29
39 70 830	Fit Control SG Extra Finger Support	24
39 70 810	Fit Control SG Finger Support	24
39 70 993	Fit Control Supreme G3 Fusion	25
39 70 991	Fit Control Supreme G3 Fusion Ortho-Tec	21
39 70 400	Pure Contact AX2	45
39 70 900	Pure Contact G3 Fusion	44
39 70 000	Pure Contact G3 SpeedBump	49
39 70 700	Pure Contact R3	45
39 70 200	Pure Contact S1	44
39 70 300	Reusch Futsal Pro	51
39 70 340	Reusch Futsal Pro 3/4 SFX	51
39 70 330	Reusch Futsal Pro SFX	51
39 70 320	Reusch Futsal SG SFX	51

GOALKEEPER GLOVES JUNIOR

39 72 805	Fit Control Freegel SG Junior	47
39 72 955	Fit Control Pro G3 Junior	38
39 72 950	Fit Control Pro G3 Ortho-Tec Junior	36
39 70 979	Fit Control Pro G3 SpeedBump Evolution	49
39 72 735	Fit Control R3 Junior	41
39 72 610	Fit Control RG Open Cuff Finger Support Junior	40
39 72 615	Fit Control RG Open Cuff Junior	41
39 72 238	Fit Control S1 Evolution Finger Support Junior	37
39 72 239	Fit Control S1 Evolution Junior	38
39 72 230	Fit Control S1 Finger Support Junior	37
39 72 215	Fit Control S1 Junior	39
39 72 217	Fit Control S1 Roll Finger Junior	38
39 72 510	Fit Control SD Open Cuff Finger Support Junior	40
39 72 515	Fit Control SD Open Cuff Junior	41
39 72 830	Fit Control SG Extra Finger Support Junior	37
39 72 835	Fit Control SG Extra Junior	39
39 72 810	Fit Control SG Finger Support Junior	37
39 72 815	Fit Control SG Junior	39
39 72 200	Pure Contact S1 Junior	44

GOALKEEPER APPAREL ADULT

34 13 500	Reusch 3/4 Function Shirt	56
38 16 205	Reusch Contest Pant	60
38 18 205	Reusch Contest Short	60
38 17 205	Reusch Contest Short 3/4	60
38 13 505	Reusch CS 3/4 Shirt Hybrid	57
38 17 533	Reusch CS 3/4 Short Padded	55
39 17 520	Reusch CS 3/4 Short Soft Padded	56
37 13 500	Reusch CS 3/4 Undershirt Padded Pro	54
38 17 530	Reusch CS Femur 3/4 Short Padded	54
38 18 530	Reusch CS Femur Short Padded	55
37 12 505	Reusch CS Shirt Sleeveless	57
37 18 505	Reusch CS Short Hybrid	57
37 17 505	Reusch CS Short Hybrid 3/4	57
38 18 533	Reusch CS Short Padded	55
37 18 530	Reusch CS Short Padded Pro XRD	54
39 18 520	Reusch CS Short Soft Padded	56
39 14 500	Reusch Goalkeeping Raincoat	59
39 11 700	Reusch Match Longsleeve Padded	58
39 11 300	Reusch Match Pro Longsleeve Padded	58
39 18 705	Reusch Match Short	58
39 90 110	Reusch Promo Hoodie	59
39 90 100	Reusch Promo T-Shirt	59
37 16 200	Reusch Starter Pant	60
33 18 202	Reusch Starter Short	60

GOALKEEPER APPAREL JUNIOR

38 26 205	Reusch Contest Pant Junior	63
38 27 205	Reusch Contest Short 3/4 Junior	63
38 28 205	Reusch Contest Short Junior	63
39 21 300	Reusch Match Pro Longsleeve Padded Junior	62
39 40 200	Reusch Match Set Junior	62
39 28 700	Reusch Match Short Padded Junior	62
37 26 200	Reusch Starter Pant Junior	63
33 28 202	Reusch Starter Short Junior	63

PROTECTORS

39 77 010	Reusch Active Elbow Protector	67
39 77 000	Reusch Active Knee Protector	67
31 77 514	Reusch Elbow Protector Deluxe	66
39 77 511	Reusch Elbow Protector Sleeve	66
37 77 527	Reusch GK Compression Ankle Support	68
37 77 537	Reusch GK Compression Calf Sleeve	68
37 77 517	Reusch GK Compression Elbow Support	67
37 77 507	Reusch GK Compression Knee Support	67
36 77 530	Reusch GK Protective Liner	68
31 77 520	Reusch GK Wrist Support	68
31 77 521	Reusch GK Wrist Support short	68
31 77 504	Reusch Knee Protector Deluxe	66
39 77 501	Reusch Knee Protector Sleeve	66
39 77 065	Reusch Shinguard Alienathor Lite	69
39 77 060	Reusch Shinguard Alienathor Pro	69
39 77 025	Reusch Shinguard D-Fend Lite	69
39 77 020	Reusch Shinguard D-Fend Pro	69
38 77 516	Reusch Supreme Elbow Protector Sleeve	65
38 77 506	Reusch Supreme Knee Protector Sleeve	65
36 77 510	Reusch Ultimate Elbow Guard	65
36 77 500	Reusch Ultimate Knee Guard	65

ACCESSORIES

39 62 801	Display Glove-Wash	71
26 87 164	Dryzone Glove	72
47 05 109	Reusch Ashton	72
38 70 500	Reusch Field player glove	72
37 62 400	Reusch GK Towel Match	71
39 62 800	Reusch Glove-Wash	70
39 63 010	Reusch Goalkeeping Bag	71
48 05 100	Reusch Hashtag	72
39 62 970	Reusch Keyring	70
37 62 000	Reusch Neck Warmer	72
39 62 972	Reusch Soft Keyring Combo Pack	71

78 SIZE CHARTS

THE FOLLOWING SIZE CHARTS WILL HELP YOU TO ESTIMATE YOUR INDIVIDUAL SIZE. PLEASE CONSIDER THEM ONLY AS APPROXIMATE VALUES. FOR A PERFECT FIT IT'S OF UTMOST IMPORTANCE TO TRY THE PRODUCT ON. DEPENDING ON THE PRODUCT THE REFERENCE MEASUREMENT IS EITHER THE BODY HEIGHT OR THE RANGE OF JOINT.

SHIRT

USA/CAN/INT	S	M	L	XL	XXL
D/I	S/176	M	L	XL	XXL
E	16	M	L	XL	XXL
GB	34/35	M	L	XL	XXL
F	S	M	L	XL	XXL

SHORT

USA/CAN/INT	S	M	L	XL	XXL
D/I	5	6	7	8/9	9/10
E	S	M	L	XL	XXL
GB	32/34	34/36	36/38	38/40 40/42	40/42 42/44

JUNIOR

USA/CAN/INT	XXS	XS	S	M	L	XL Junior
D	116	128	140	152	164	176
F/E/I	6	8	10	12	14	16
GB	22/24	24/26	26/28	28/30	30/32	34/36

SHINGUARDS

XS	116 - 134 cm
S	134 - 152 cm
M	152 - 170 cm
L	170 - 188 cm
XL	188 - 206 cm

GK WRIST SUPPORT

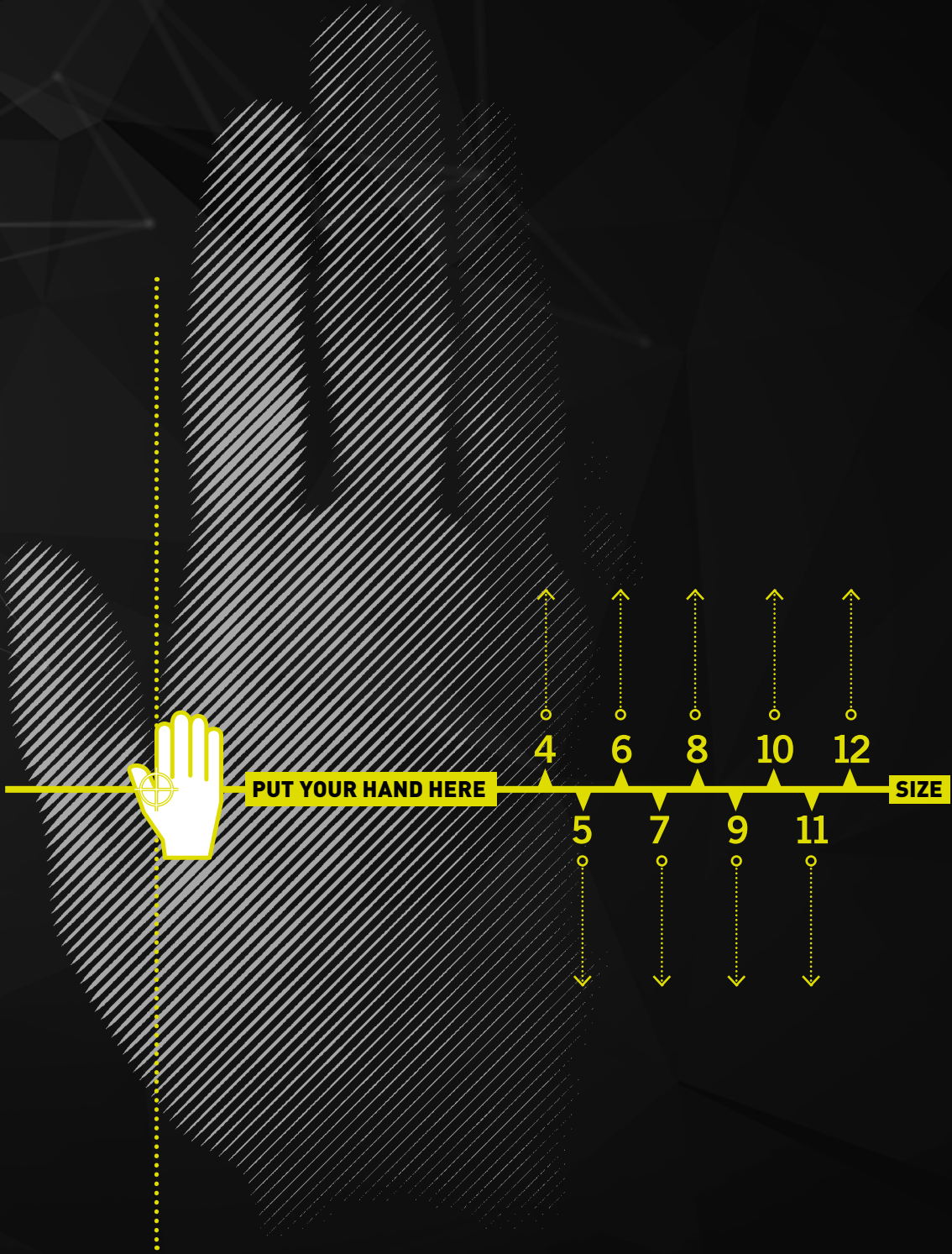
S	16 - 17 cm
M	17 - 18 cm
L	18 - 19 cm
XL	19 - 20 cm

KNEE PROTECTION

S	32 - 36 cm
M	36 - 40 cm
L	40 - 44 cm
XL	44 - 48 cm

ELBOW PROTECTION

S	24 - 27 cm
M	27 - 29 cm
L	29 - 32 cm
XL	32 - 35 cm



EUROPE

AUSTRIA

Reusch International SpA - AG

Via Miglioli 2, 20063 Cernusco S/N, Milan, Italy
Elina Gauss
T: 0039 / 02 92 106 761 • F: 0039 / 02 92 104 611
austria@reusch.com

BELGIUM

Reusch GmbH

In Laisen 31-35, 72766 Reutlingen, Germany
Daniela Endrijaitis
T: 0049 / 7121 16276 0 • F: 0049 / 7121 16276 60
benelux@reusch.com

BOSNIA-HERZEGOVINA

Taurus d.o.o.

Cvetkova 25, 1000 Ljubljana, Slovenia
Borut Verderber
T: 00386 / 1 420 12 79 • F: 00386 / 1 427 19 19
borut@taurus.si

BULGARIA

Miras Krastevi Ltd.

4° Simeonovsko Shose Blvd., Sofia 1700, Bulgaria
Kremena Rabadjiiska
T: 00359 / 2 962 7201
k.rabadjiiska@miras-sport.com

CROATIA

Taurus d.o.o.

Cvetkova 25, 1000 Ljubljana, Slovenia
Borut Verderber
T: 00386 / 1 420 12 79 • F: 00386 / 1 427 19 19
borut@taurus.si

CYPRUS

Futbolista

Melpomenis 19, Kapsalos, Limassol, 3083,
Cyprus
Michael Savvides
T: 00357 / 99674480 • F: 00357 / 25 733 337
futbolistacyprus@gmail.com
www.futbolistastore.com

CZECH REPUBLIC

Alpis s.r.o.

Otokara Březiny 3067, 438 01 Žatec,
Czech Republic
Petr Loska
T: 00420 / 606 604 040
info@alpis.eu

DENMARK

Tranberg & Dahl A/S

Brandsmarkvej 6, 4180 Sorø, Denmark
Allan Tranberg Augustesen
T: 0045 / 208 28 150
info@tranbergdahl.dk

FINLAND

KL Sport Oy

Valuraudantie 17, FI-00700 Helsinki, Finland
Tuomas Hietaniemi
T: 00358 9 6860 760
info@reusch.fi

FRANCE

Reusch International SpA - AG

Via Miglioli 2, 20063 Cernusco S/N, Milan, Italy
Ivana Zanelli
T: 0811 / 85 13 46 • F: 0039 / 02 9210 4611
france@reusch.com

GERMANY

Reusch GmbH

In Laisen 31-35, 72766 Reutlingen, Germany
Daniela Endrijaitis
T: 0049 / 7121 16276 0 • F: 0049 / 7121 16276 60
d.endrijaitis@reusch.com

GREECE

Athletika

Stamathioudaki 39, 74100 Rethymno, Greece
Kiosses Vagelis / Skiadaresi Konstantina
T: 0030 / 2831054110 • F: 0030 / 2831057713
info@sportys.gr

ICELAND

Thorn ehf

PO Box 4208, 124 Reykjavik, Iceland
Ingolfur Oskarsson
T: 00354 / 568 0422 • F: 00354 / 588 9518
thorn@simnet.is

IRELAND

Reusch GmbH

In Laisen 31-35, 72766 Reutlingen, Germany
Bob Fidler
T: / F: 0044 / 161 439 4383

ITALY

Reusch International SpA - AG

Via Miglioli 2, 20063 Cernusco S/N, Milan, Italy
Mariangela Di Gregorio
T: 0039 / 02 9210 6761 • F: 0039 / 02 9210 4611
italia@reusch.com

LATVIA

DZA Ltd.

Tallinas str. 32, Riga, LV1001, Latvia
Dzintars Lerhis
T: 00371 / 67298652
dzintars@fun-box.lv

LUXEMBOURG

Reusch GmbH

In Laisen 31-35, 72766 Reutlingen, Germany
Daniela Endrijaitis
T: 0049 / 7121 16276 0 • F: 0049 / 7121 16276 60
benelux@reusch.com

NETHERLANDS

Reusch GmbH

In Laisen 31-35, 72766 Reutlingen, Germany
Daniela Endrijaitis
T: 0049 / 7121 16276 0 • F: 0049 / 7121 16276 60
benelux@reusch.com

NORWAY

Ultimate Nordic AS

Tevlingveien 23, 1081 Oslo, Norway
T: 0047 / 22575050 • F: 0047 / 22575050
lloa.jambor@ultimatenordic.no

POLAND

Larix Spółka Jawna

ul. Orzeszkowej 40, 43300 Bielsko-Biala, Poland
Lukasz Hola
T: 0048 / 33 497 50 40 • F: 0048 / 33 497 50 41
l.hola@larix.home.pl

PORTUGAL

Cfc Com. Imp. E Exp. Mat. Desp. Lda

Apartado 13, Bairro do Depósito nº 63, 2395-106
Minde, Portugal
Fernando Marques / Carlos Leiria
T: 00351 / 249 849 066
geral@reusch.pt

ROMANIA

SC Terra Sport SRL

Str. Drumul Bacriului Nr.57, Sect. 6,
062381 Bucharest, Romania
Vasile Cretu
T: 004 / 021 324 20 61 • F: 004 / 021 324 30 75
vasile@terrasport.ro • office@terrasport.ro

RUSSIA

LLC Premier Football DC

Bolshie Kamenshchiki str., 6, bld.1, 115172
Moscow, Russia
Victor Kharitonov
T: 007 / 499 7637134 • F: 007 / 499 7637136
victor.kharitonov@premier-football.ru

SERBIA

Taurus d.o.o.

Cvetkova 25, 1000 Ljubljana, Slovenia
Borut Verderber
T: 00386 / 1 420 12 79 • F: 00386 / 1 427 19 19
borut@taurus.si

SLOVAKIA

Alpis s.r.o.

Otokara Březiny 3067, 438 01 Žatec,
Czech Republic
Petr Loska
T: 00420 / 606 604 040
info@alpis.eu

SLOVENIA

Taurus d.o.o.

Cvetkova 25, 1000 Ljubljana, Slovenia
Borut Verderber
T: 00386 / 1 420 12 79 • F: 00386 / 1 427 19 19
borut@taurus.si

SPAIN

Industrias Mercury S.A.

Autovia de Logroño, Km 2.400, Poligono 'El
Portazgo', nave 45, 50011 Zaragoza, Spain
Gonzalo Lainez
T: 0034 / 976 328 313 • F: 0034 / 976 330 461
gonzalolainez@mercury.com.es

SWEDEN

Sport Scandinavia AB

Sylveniusgatan 4, 1tr, 754 50 Uppsala, Sweden
Immanuel Hirschfeld
T: 0046 / 70 744 34 29
immanuel@spsca.se • info@spsca.dk

SWITZERLAND

WS4sports AG
 Bütschwilstrasse 11, 9607 Mosnang SG,
 Simone Keller
 T: 0041 / 71 982 7400 • F: 0041 / 71 982 7409
mail@ws4sports.ch

TURKEY

Petraspor Sanayi Ve Ticaret Ltd. Sti.
 Kuzey plaza, Kat -2, istoc - 34218 Istanbul, Turkey
 Mubashir Khan
 T: 0090 / 212 446 12 22 • F: 0090 / 212 446 12 14
khan@greenhillssports.com

UNITED KINGDOM

Reusch GmbH
 In Laisen 31-35, 72766 Reutlingen, Germany
 Bob Fidler
 T: 0044 / 161 439 4383 • F: 0044 / 161 439 4383
b.fidler@reusch.com

ASIA**ISRAEL**

Peleg Nil Ltd.
 7 Hamesik Street, Emek Hefer Industrial zone
 3877701 Emek Hefer, Israel
 Neil Ben Dror
 T: 00972 / 732 505050 • F: 00972 / 723 505051
nil@pelegnil.com

JAPAN

Uvex Sports Japan Co.,Ltd.
 3-6 Kanda Nishikicho Chiyoda-ku,
 Tokyo 101-0054, Japan
 Kaori Sugishita
 T: 0081 / 3 5283 5561 • F: 0081 / 3 5283 5562
sugishita@uvex-sports.jp

KOREA

Kika Co.,Ltd
 8th Fl, Fin Tower, 280-2, Eulji-ro, Jung-gu, Seoul,
 Republic of Korea
 Natalie Woo
 T: 0082 / 70 4630 0115 • F: 0082 / 2 2238 8787
woo@kika.co.kr

SINGAPORE

Mallve Sports
 36, Lorong Tanggam, Singapore 798785
 Panneerselvam Vellisamy
 T: 006 / 592975906 • F: 006 / 564840287
mallve_sports@ymail.com

SOUTH AMERICA**ARGENTINA**

Reusch Argentina s.r.l.
 Pasaje Pedro Palacios 1468, Villa Raffo, Partido
 de 3 de febrero - Pcia de Buenos Aires, Argentina,
 CP (B1675ASD)
 Natalia Babenco
 T: 0054 / 11 4712 6484 • F: 0054 / 11 4712 6484
natalia@reuschargentina.com.ar

BOLIVIA

Steel Sport Ltda.
 Santa Cruz 231, La Paz, Bolivia
 Erland J. Estevez
 T: 00591 / 2246 1354 • F: 00591 / 2246 1354
erlandestevez@hotmail.com

BRAZIL

Undersport Com.
 E Imp. De Artigos Esportivos Ltda
 Rua Angelo Dourado 411.B, Anchieta
 Porto Alegre - Rs - Brasil
 Edson De Almeida Pinedo
 T: 005551 / 3337 1784
edson@undersport.com.br

CHILE

Articulos Deportivos Sports Complements Ltda.
 Av. Las Parcelas 7950, Nave 9, Peñalolen,
 Santiago de Chile
 Bernardo Teitelman Hass
 T: 00562 / 2 292 1014 • F: 00562 / 2 292 7970
sports@comp.cl

COLOMBIA

HYB Atlanta Deportes LTDA.
 Carrera 45A# Nro. 127-88 Bogota, Colombia
 Jesus Ramirez
 T: 0057 1 310 4013 / 312 305 9838
gerencia@atlanta-deportes.com.co

PARAGUAY

Intersport S.R.L.
 Madame Lynch 999 C/Tte Heyn 1197
 Asuncion Paraguay
 Jorge Cazal
 T: 00595 / 21 600955 • F: 00595 / 21 422 473
saltarinrojosport@hotmail.com

PERU

Gardien Sports E.I.R.L.
 Malecon De La Marina 224, Residencial Sta Cruz
 - Miraflores, Peru
 Renzo Villalobos
 T: 00511 / 734 2373 • T: 00511 / 998 001 769
renzo.villalobos@reuschperu.com.pe

URUGUAY

Mauricio Nanni
 18 de Julio 1240, local 22 0, Montevideo, Uruguay
 Mauricio Nanni
 T: 0059 / 829031856
reusch.uruguay@gmail.com
mauronanni1@hotmail.com

VENEZUELA

Alan Liebeskind
 Inversiones Simplementefutbol Ca
 Av. Principal de las mayas, local no 18. Sector las
 mayas
 Caracas, distrito capital, zona postal 1090
 T: 0058 / 04 125 365 006 • T: 0058 / 04 121 474 407
reuschvzla@gmail.com

COSTA RICA

Cesar Rodriguez Blanco
 San José, Mata Redonda, Sabana Sur
 40mtes este de la Contraloría General de la
 República de Costa Rica.
 Edificio Producciones Escazú Oficina #19
 T: 00506 / 4034 4120 • T: 00506 / 8567 5442
reusch_cr@outlook.com

NORTH AMERICA**CANADA**

Continental Sports Supply, Inc.
 3981 South Decatur Street, Englewood CO 80110,
 USA
 David Banning
 T: 001 / 720 833 0798 • F: 001 / 720 833 0814
contsports1@juno.com

MEXICO

Reusch Mexico
 Calle 5 No. 14 Interior 03 Colonia Alce Blanco,
 Naucalpan Estado de Mexico, Mexico. C.P. 53370
 Salomon Saba
 T: 5255 / 55760192
salomon@reusch.com.mx

USA

Continental Sports Supply, Inc.
 3981 South Decatur Street, Englewood CO 80110,
 USA
 David Banning
 T: 001 / 720 833 0798 • F: 001 / 720 833 0814
dave@reuschusa.com

OCEANIA**AUSTRALIA**

Regent Sporting Goods (Aust.)
 13 Ramage Street, Bayswater, VIC, 3153 Australia
 Tony Wheeler / Mark Unternahrer
 T: 0061 / 3 9720 5000 • F: 0061 / 3 9720 4818
twheeler@regentaus.com.au
mark@regentaus.com.au

NEW ZEALAND

Fishing and Leisure Group Limited
 160 Foundry Road, Silverdale 0932, New Zealand
 T: 0064 / 942 190 38 • F: 0800 866 557
orders@fishingandleisure.co.nz

AFRICA**TUNISIA**

Team Distribution
 Avenue 14 Janvier 2011 Sidi Daoued La Marsa
 2046, Tunis, Tunisie
 Ahmed Ben Aissa
 T: 00216 / 71 777 754 • F: 00216 / 71 777 658
ahmed@teamdistribution.com.tn

PURE GOAL KEEPING 2019

English

2,90 €

German

2,90 €



4060485089729



4060485089736

reusch